

APAF1
Purified Mouse Monoclonal Antibody
Catalog # AO2729a

Specification

APAF1 - Product Information

Application	E, WB, FCM
Primary Accession	O14727
Reactivity	Human
Host	Mouse
Clonality	Monoclonal
Isotype	Mouse IgG2b
Calculated MW	141.8kDa KDa

Immunogen
 Purified recombinant fragment of human APAF1 (AA: 1138-1237) expressed in E. Coli.

Formulation

Purified antibody in PBS with 0.05% sodium azide

APAF1 - Additional Information

Gene ID 317

Other Names

CED4; APAF-1

Dilution

E~~ 1/10000
 WB~~ 1/500 - 1/2000
 FCM~~ 1/200 - 1/400

Storage

Maintain refrigerated at 2-8°C for up to 6 months. For long term storage store at -20°C in small aliquots to prevent freeze-thaw cycles.

Precautions

APAF1 is for research use only and not for use in diagnostic or therapeutic procedures.

APAF1 - Protein Information

Name APAF1 ([HGNC:576](#))

Synonyms KIAA0413

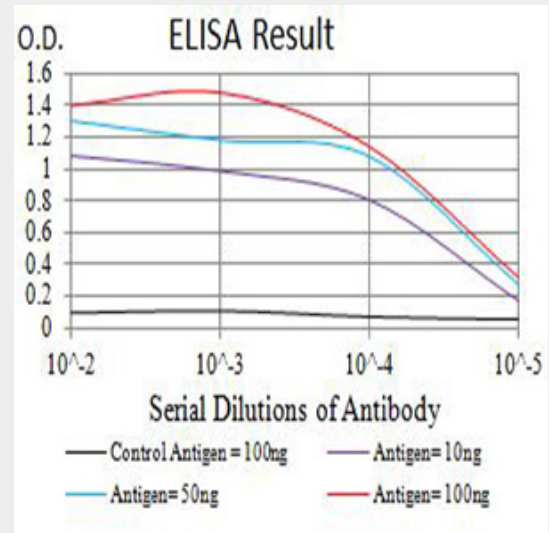


Figure 1: Black line: Control Antigen (100 ng); Purple line: Antigen (10ng); Blue line: Antigen (50 ng); Red line: Antigen (100 ng)

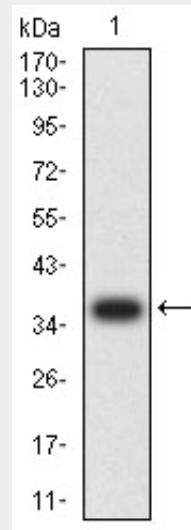


Figure 2: Western blot analysis using APAF1 mAb against human APAF1 (AA: 1138-1237) recombinant protein. (Expected MW is 37 kDa)

Function

Oligomeric Apaf-1 mediates the cytochrome c-dependent autocatalytic activation of pro-caspase-9 (Apaf-3), leading to the activation of caspase-3 and apoptosis. This activation requires ATP. Isoform 6 is less effective in inducing apoptosis.

Cellular Location

Cytoplasm.

Tissue Location

Ubiquitous. Highest levels of expression in adult spleen and peripheral blood leukocytes, and in fetal brain, kidney and lung. Isoform 1 is expressed in heart, kidney and liver

APAF1 - Protocols

Provided below are standard protocols that you may find useful for product applications.

- [Western Blot](#)
- [Blocking Peptides](#)
- [Dot Blot](#)
- [Immunohistochemistry](#)
- [Immunofluorescence](#)
- [Immunoprecipitation](#)
- [Flow Cytometry](#)
- [Cell Culture](#)

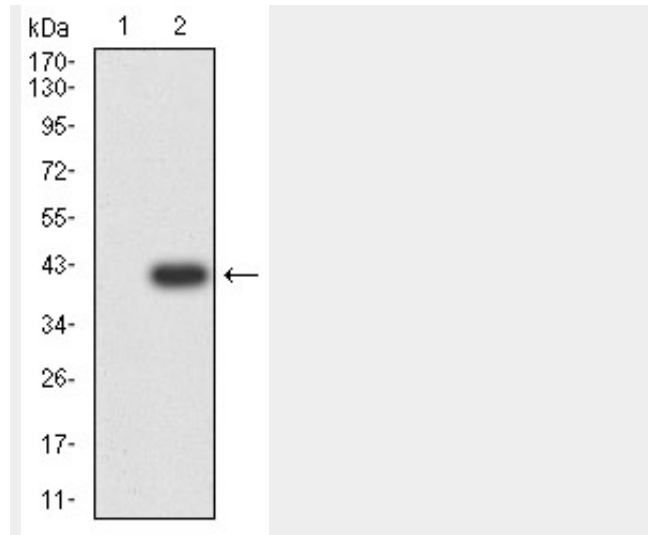


Figure 3: Western blot analysis using APAF1 mAb against HEK293 (1) and APAF1 (AA: 1138-1237)-hlgGfc transfected HEK293 (2) cell lysate.

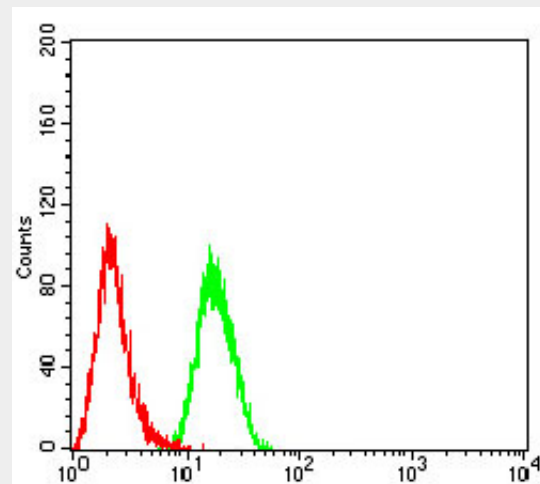


Figure 4: Flow cytometric analysis of Hela cells using APAF1 mouse mAb (green) and negative control (red).

APAF1 - References

1. Tumour Biol. 2014 Mar;35(3):2211-8. 2. Cancer Sci. 2011 Jan;102(1):267-74.