

PLXNA1
Purified Mouse Monoclonal Antibody
Catalog # AO2683a

Specification

PLXNA1 - Product Information

Application **E, WB, FCM, ICC**
 Primary Accession [Q9UIW2](#)
 Reactivity **Human**
 Host **Mouse**
 Clonality **Monoclonal**
 Isotype **Mouse IgG1**
 Calculated MW **211kDa KDa**
Immunogen
 Purified recombinant fragment of human PLXNA1 (AA: 1100-1200) expressed in E. Coli.

Formulation

Purified antibody in PBS with 0.05% sodium azide

PLXNA1 - Additional Information

Gene ID 5361

Other Names

NOV; NOVP; PLXN1; PLEXIN-A1

Dilution

E~~ 1/10000
 WB~~ 1/500 - 1/2000
 FCM~~1/200 - 1/400
 ICC~~ 1/100 - 1/500

Storage

Maintain refrigerated at 2-8°C for up to 6 months. For long term storage store at -20°C in small aliquots to prevent freeze-thaw cycles.

Precautions

PLXNA1 is for research use only and not for use in diagnostic or therapeutic procedures.

PLXNA1 - Protein Information

Name PLXNA1

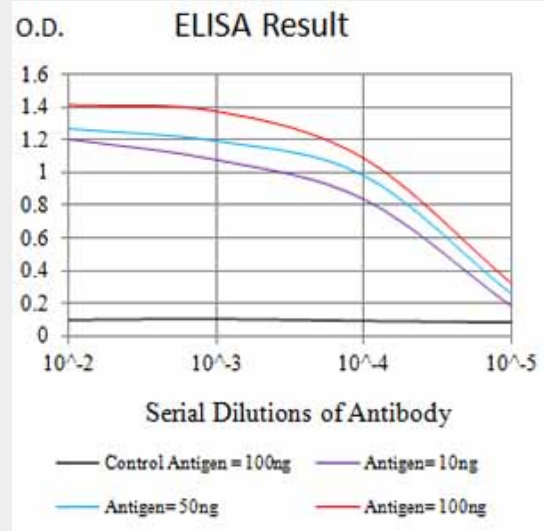


Figure 1: Black line: Control Antigen (100 ng); Purple line: Antigen (10ng); Blue line: Antigen (50 ng); Red line: Antigen (100 ng)

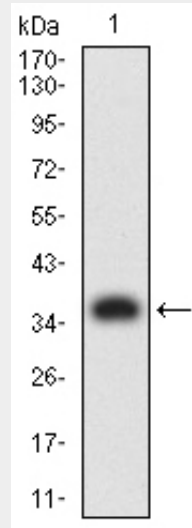


Figure 2: Western blot analysis using PLXNA1 mAb against human PLXNA1 (AA: 1100-1200) recombinant protein. (Expected MW is 36.8 kDa)

Synonyms NOV, PLXN1

Function

Coreceptor for SEMA3A, SEMA3C, SEMA3F and SEMA6D. Necessary for signaling by class 3 semaphorins and subsequent remodeling of the cytoskeleton. Plays a role in axon guidance, invasive growth and cell migration. Class 3 semaphorins bind to a complex composed of a neuropilin and a plexin. The plexin modulates the affinity of the complex for specific semaphorins, and its cytoplasmic domain is required for the activation of down-stream signaling events in the cytoplasm (By similarity).

Cellular Location

Cell membrane; Single-pass type I membrane protein

Tissue Location

Detected in fetal brain, lung, liver and kidney.

PLXNA1 - Protocols

Provided below are standard protocols that you may find useful for product applications.

- [Western Blot](#)
- [Blocking Peptides](#)
- [Dot Blot](#)
- [Immunohistochemistry](#)
- [Immunofluorescence](#)
- [Immunoprecipitation](#)
- [Flow Cytometry](#)
- [Cell Culture](#)

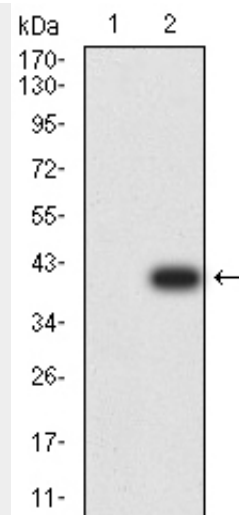


Figure 3: Western blot analysis using PLXNA1 mAb against HEK293 (1) and PLXNA1 (AA: 1100-1200)-hlgGfc transfected HEK293 (2) cell lysate.

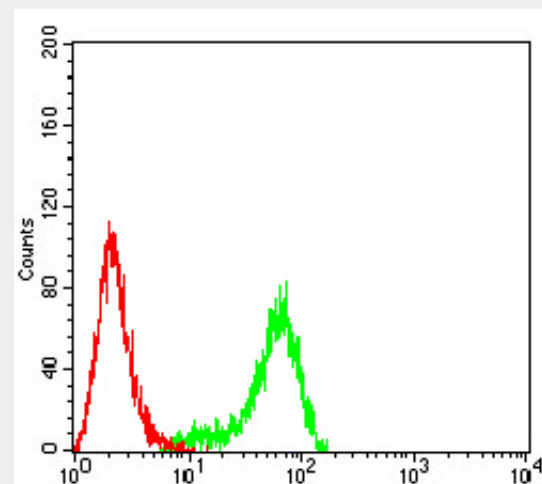


Figure 5: Flow cytometric analysis of HeLa cells using PLXNA1 mouse mAb (green) and negative control (red).

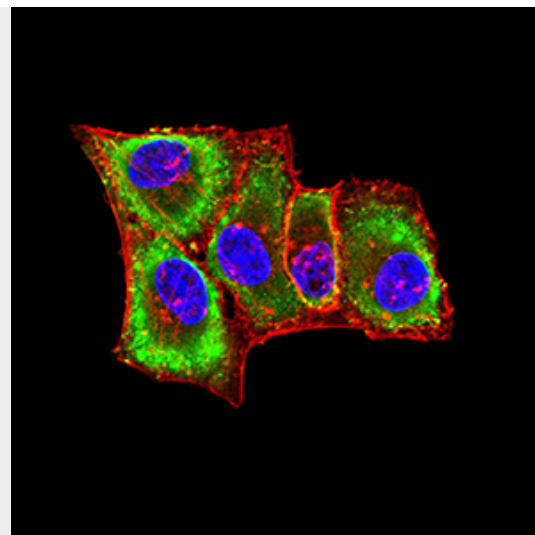


Figure 4: Immunofluorescence analysis of HeLa cells using PLXNA1 mouse mAb (green). Blue: DRAQ5 fluorescent DNA dye. Red: Actin filaments have been labeled with Alexa Fluor-555 phalloidin. Secondary antibody from Fisher (Cat#: 35503)

PLXNA1 - References

1. PLoS One. 2016 Mar 10;11(3):e0149833.
2. World J Gastroenterol. 2007 Dec 28;13(48):6558-61.