

**Calcyclin Antibody**  
**Purified Mouse Monoclonal Antibody**  
**Catalog # AO1044a**

**Specification**

**Calcyclin Antibody - Product Information**

Application	<b>WB, IHC</b>
Primary Accession	<a href="#">Q9HB71</a>
Reactivity	<b>Human</b>
Host	<b>Mouse</b>
Clonality	<b>Monoclonal</b>
Isotype	<b>IgG1</b>

**Description**

Calcyclin encoded by this gene is a member of the S100 family of proteins containing 2 EF-hand calcium-binding motifs. S100 proteins are localized in the cytoplasm and/or nucleus of a wide range of cells, and involved in the regulation of a number of cellular processes such as cell cycle progression and differentiation. S100 genes include at least 13 members which are located as a cluster on chromosome 1q21. This protein may function in stimulation of Ca<sup>2+</sup>-dependent insulin release, stimulation of prolactin secretion, and exocytosis. Chromosomal rearrangements and altered expression of this gene have been implicated in melanoma.

**Immunogen**

Purified recombinant fragment of calyclin expressed in E. Coli.

**Formulation**

Purified antibody in PBS containing 0.03% sodium azide.

**Calcyclin Antibody - Additional Information**

**Gene ID** 27101

**Other Names**

Calcyclin-binding protein, CacyBP, hCacyBP, S100A6-binding protein, Siah-interacting protein, CACYBP, S100A6BP, SIP

**Dilution**

WB~~1/500 - 1/2000  
IHC~~1/200 - 1/1000

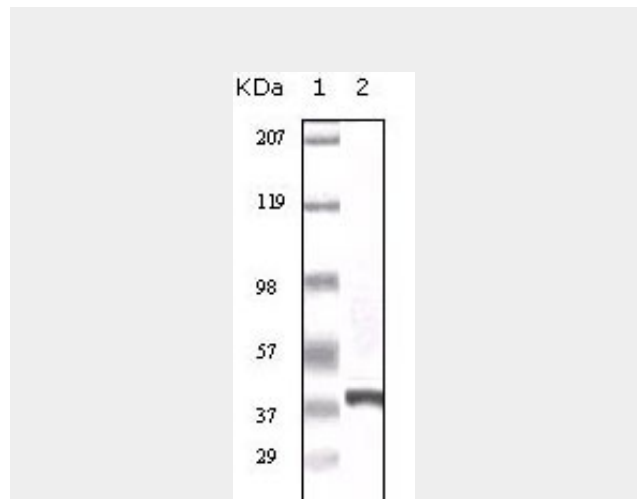


Figure 1: Western blot analysis using calyclin mouse mAb against truncated calyclin recombinant protein.

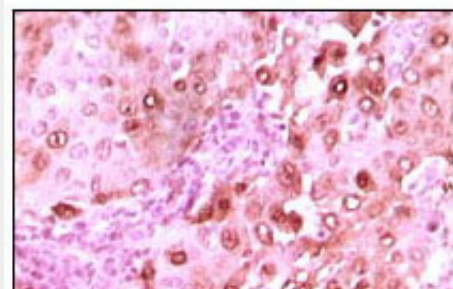


Figure 2: Immunohistochemical analysis of paraffin-embedded human brain glioma tissue showing nuclear localization using calyclin mouse mAb with DAB staining.

**Calcyclin Antibody - References**

1. Bean C.et.al J Mol Biol. 2005 Jun 3;349(2):349-66.
2. HWang R.et.al J Biol Chem. 2004 May 14;279(20):21239-47.

**Storage**

Maintain refrigerated at 2-8°C for up to 6 months. For long term storage store at -20°C in small aliquots to prevent freeze-thaw cycles.

**Precautions**

Calcyclin Antibody is for research use only and not for use in diagnostic or therapeutic procedures.

**Calcyclin Antibody - Protein Information**

**Name** CACYBP

**Synonyms** S100A6BP, SIP

**Function**

May be involved in calcium-dependent ubiquitination and subsequent proteasomal degradation of target proteins. Probably serves as a molecular bridge in ubiquitin E3 complexes. Participates in the ubiquitin-mediated degradation of beta-catenin (CTNNB1).

**Cellular Location**

Nucleus. Cytoplasm. Note=Cytoplasmic at low calcium concentrations. In neuroblastoma cells, after a retinoic acid (RA) induction and calcium increase, it localizes in both the nucleus and cytoplasm. The nuclear fraction may be phosphorylated

**Calcyclin Antibody - Protocols**

Provided below are standard protocols that you may find useful for product applications.

- [Western Blot](#)
- [Blocking Peptides](#)
- [Dot Blot](#)
- [Immunohistochemistry](#)
- [Immunofluorescence](#)
- [Immunoprecipitation](#)
- [Flow Cytometry](#)
- [Cell Culture](#)