

SUMO3 Antibody
Purified Mouse Monoclonal Antibody (Mab)
Catalog # AM1201a

Specification

SUMO3 Antibody - Product Information

Application	WB,E
Primary Accession	P55854
Reactivity	Human
Host	Mouse
Clonality	Monoclonal
Isotype	Mouse IgG1

SUMO3 Antibody - Additional Information

Gene ID 6612

Other Names

Small ubiquitin-related modifier 3, SUMO-3, SMT3 homolog 1, {ECO:0000312|HGNC:HGNC:11124}, SUMO-2, Ubiquitin-like protein SMT3A, Smt3A, SUMO3 (http://www.genenames.org/cgi-bin/gene_symbol_report?hgnc_id=11124) target="_blank">HGNC:11124)

Target/Specificity

Purified recombinant GST-SUMO3 fusion protein was used as immunogen.

Dilution

WB ~ ~ 1:2000

Format

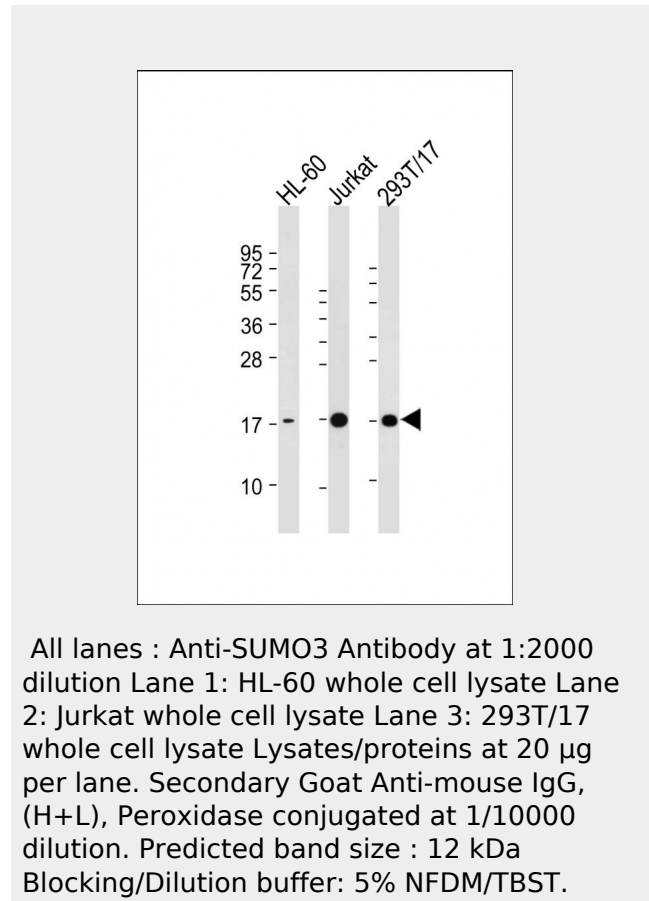
Purified polyclonal antibody supplied in PBS with 0.09% (W/V) sodium azide. This antibody is purified through a protein G column, followed by dialysis against PBS.

Storage

Maintain refrigerated at 2-8°C for up to 2 weeks. For long term storage store at -20°C in small aliquots to prevent freeze-thaw cycles.

Precautions

SUMO3 Antibody is for research use only and not for use in diagnostic or therapeutic procedures.



SUMO3 Antibody - Background

SUMO proteins, such as SUMO3, and ubiquitin (see MIM 191339) posttranslationally modify numerous cellular proteins and affect their metabolism and function. However, unlike ubiquitination, which targets proteins for degradation, sumoylation participates in a number of cellular processes, such as nuclear transport, transcriptional regulation, apoptosis, and protein stability (Su and Li, 2002 [PubMed 12383504]).

SUMO3 Antibody - References

SEN3-mediated de-conjugation of SUMO2/3 from promyelocytic leukemia is correlated with accelerated cell proliferation under mild oxidative stress. Han Y, et al. J Biol Chem, 2010

SUMO3 Antibody - Protein Information

Name SUMO3 ([HGNC:11124](#))

Function

Ubiquitin-like protein which can be covalently attached to target lysines either as a monomer or as a lysine-linked polymer. Does not seem to be involved in protein degradation and may function as an antagonist of ubiquitin in the degradation process. Plays a role in a number of cellular processes such as nuclear transport, DNA replication and repair, mitosis and signal transduction. Covalent attachment to its substrates requires prior activation by the E1 complex SAE1-SAE2 and linkage to the E2 enzyme UBE2I, and can be promoted by an E3 ligase such as PIAS1-4, RANBP2 or CBX4 (PubMed: [11451954](http://www.uniprot.org/citations/11451954) target="_blank">11451954, PubMed: [18538659](http://www.uniprot.org/citations/18538659) target="_blank">18538659, PubMed: [21965678](http://www.uniprot.org/citations/21965678) target="_blank">21965678). Plays a role in the regulation of sumoylation status of SETX (PubMed: [24105744](http://www.uniprot.org/citations/24105744) target="_blank">24105744).

Cellular Location

Cytoplasm. Nucleus. Nucleus, PML body

Tissue Location

Expressed predominantly in liver.

Apr 23. PMID 20181954. Association of mitotic regulation pathway polymorphisms with pancreatic cancer risk and outcome. Couch FJ, et al. Cancer Epidemiol Biomarkers Prev, 2010 Jan. PMID 20056645. The p150 subunit of CAF-1 causes association of SUMO2/3 with the DNA replication foci. Uwada J, et al. Biochem Biophys Res Commun, 2010 Jan 1. PMID 19919826. SUMOylation of nuclear actin. Hofmann WA, et al. J Cell Biol, 2009 Jul 27. PMID 19635839. Heat shock protein 27 is involved in SUMO-2/3 modification of heat shock factor 1 and thereby modulates the transcription factor activity. Brunet Simioni M, et al. Oncogene, 2009 Sep 17. PMID 19597476.

SUMO3 Antibody - Protocols

Provided below are standard protocols that you may find useful for product applications.

- [Western Blot](#)
- [Blocking Peptides](#)
- [Dot Blot](#)
- [Immunohistochemistry](#)
- [Immunofluorescence](#)
- [Immunoprecipitation](#)
- [Flow Cytometry](#)
- [Cell Culture](#)

SUMO3 Antibody - Citations

- [Scc1 sumoylation by Mms21 promotes sister chromatid recombination through counteracting Wapl.](#)