

**CD32A Antibody (clone 13D7)**  
**Mouse Monoclonal Antibody**  
**Catalog # ALS16265**

**Specification**

**CD32A Antibody (clone 13D7) - Product Information**

Application	<b>IHC, WB, IF</b>
Primary Accession	<a href="#">P12318</a>
Reactivity	<b>Human</b>
Host	<b>Mouse</b>
Clonality	<b>Monoclonal</b>
Calculated MW	<b>35kDa KDa</b>

**CD32A Antibody (clone 13D7) - Additional Information**

**Gene ID 2212**

**Other Names**

Low affinity immunoglobulin gamma Fc region receptor II-a, IgG Fc receptor II-a, CDw32, Fc-gamma RII-a, Fc-gamma-RIIa, FcRII-a, CD32, FCGR2A, CD32, FCG2, FCGR2A1, IGFR2

**Target/Specificity**

Human CD32A / CD32

**Reconstitution & Storage**

Store at -20°C. Minimize freezing and thawing.

**Precautions**

CD32A Antibody (clone 13D7) is for research use only and not for use in diagnostic or therapeutic procedures.

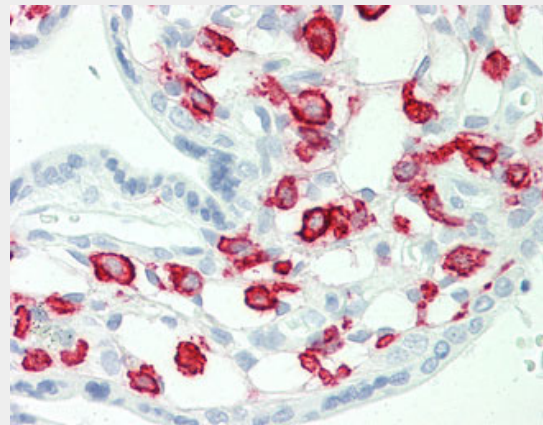
**CD32A Antibody (clone 13D7) - Protein Information**

**Name FCGR2A**

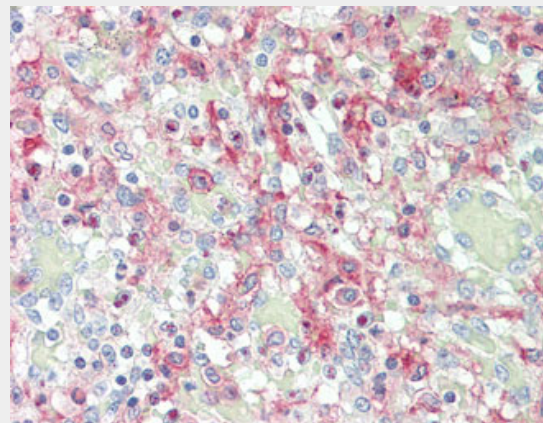
**Synonyms CD32, FCG2, FCGR2A1, IGFR2**

**Function**

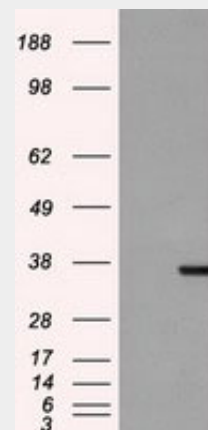
Binds to the Fc region of immunoglobulins gamma. Low affinity receptor. By binding to IgG it initiates cellular responses against pathogens and soluble antigens. Promotes



Anti-CD32A antibody IHC staining of human placenta.



Anti-CD32A antibody IHC staining of human spleen.



phagocytosis of opsonized antigens.

**Cellular Location**

Cell membrane; Single-pass type I membrane protein

**Tissue Location**

Found on monocytes, neutrophils and eosinophil platelets

**Volume**

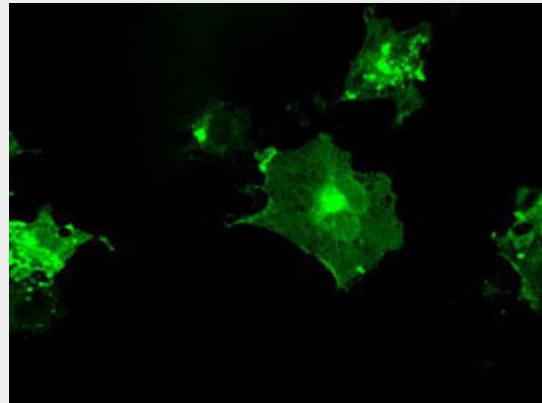
50 µl

**CD32A Antibody (clone 13D7) - Protocols**

Provided below are standard protocols that you may find useful for product applications.

- [Western Blot](#)
- [Blocking Peptides](#)
- [Dot Blot](#)
- [Immunohistochemistry](#)
- [Immunofluorescence](#)
- [Immunoprecipitation](#)
- [Flow Cytometry](#)
- [Cell Culture](#)

HEK293T cells were transfected with the pCMV6-ENTRY control (Left lane) or pCMV6-ENTRY FCGR2A...



Anti-FCGR2A mouse monoclonal antibody immunofluorescent staining of COS7 cells transiently...

**CD32A Antibody (clone 13D7) - Background**

Binds to the Fc region of immunoglobulins gamma. Low affinity receptor. By binding to IgG it initiates cellular responses against pathogens and soluble antigens. Promotes phagocytosis of opsonized antigens.

**CD32A Antibody (clone 13D7) - References**

Stuart S.G.,et al.J. Exp. Med. 166:1668-1684(1987).  
Brooks D.G.,et al.J. Exp. Med. 170:1369-1385(1989).  
Gregory S.G.,et al.Nature 441:315-321(2006).  
Hibbs M.L.,et al.Proc. Natl. Acad. Sci. U.S.A. 85:2240-2244(1988).  
Stengelin S.,et al.EMBO J. 7:1053-1059(1988).