

MS4A6A / MS4A Antibody (N-Terminus)
Rabbit Polyclonal Antibody
Catalog # ALS15878

Specification

MS4A6A / MS4A Antibody (N-Terminus) - Product Information

Application	IF, WB
Primary Accession	Q9H2W1
Reactivity	Human, Mouse, Rat
Host	Rabbit
Clonality	Polyclonal
Calculated MW	27kDa KDa

MS4A6A / MS4A Antibody (N-Terminus) - Additional Information

Gene ID 64231

Other Names

Membrane-spanning 4-domains subfamily A member 6A, CD20 antigen-like 3, Four-span transmembrane protein 3, MS4A6A, 4SPAN3, CD20L3, MS4A6

Target/Specificity

Human MS4A6A. At least three isoforms of MS4A6A are known to exist; this antibody will detect the two longer isoforms. MS4A6A antibody is predicted to not cross-react with MS4A family members.

Reconstitution & Storage

Short term 4°C, long term aliquot and store at -20°C, avoid freeze thaw cycles. Store undiluted.

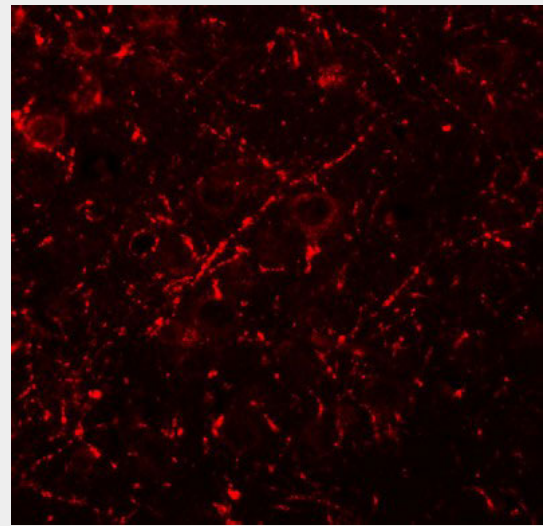
Precautions

MS4A6A / MS4A Antibody (N-Terminus) is for research use only and not for use in diagnostic or therapeutic procedures.

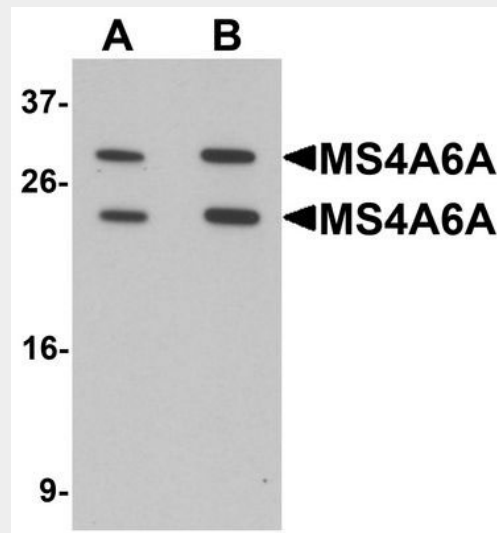
MS4A6A / MS4A Antibody (N-Terminus) - Protein Information

Name MS4A6A

Synonyms 4SPAN3, CD20L3, MS4A6



Immunofluorescence of MS4A6A in rat brain tissue with MS4A6A antibody at 20 µg/mL.



Western blot analysis of MS4A6A in 293 cell lysate with MS4A6A antibody at (A) 1 and (B) 2 µg/ml.

MS4A6A / MS4A Antibody (N-Terminus) - Background

May be involved in signal transduction as a component of a multimeric receptor complex.

Function

May be involved in signal transduction as a component of a multimeric receptor complex.

Cellular Location

Membrane; Multi-pass membrane protein.

Tissue Location

Variable expression in some B-cell, myelomonocytic, and erythroleukemia cell lines

MS4A6A / MS4A Antibody (N-Terminus) - References

Ishibashi K.,et al.Gene 264:87-93(2001).
Liang Y.,et al.Genomics 72:119-127(2001).
Liang Y.,et al.Immunogenetics 53:357-368(2001).
Zhang W.,et al.Submitted (APR-1999) to the EMBL/GenBank/DDBJ databases.
Xu X.,et al.Submitted (MAY-2000) to the EMBL/GenBank/DDBJ databases.

MS4A6A / MS4A Antibody (N-Terminus) - Protocols

Provided below are standard protocols that you may find useful for product applications.

- [Western Blot](#)
- [Blocking Peptides](#)
- [Dot Blot](#)
- [Immunohistochemistry](#)
- [Immunofluorescence](#)
- [Immunoprecipitation](#)
- [Flow Cytometry](#)
- [Cell Culture](#)