

**ZIC3 Antibody (aa178-189)**  
**Goat Polyclonal Antibody**  
**Catalog # ALS15859**

**Specification**

**ZIC3 Antibody (aa178-189) - Product Information**

Application	<b>IHC</b>
Primary Accession	<a href="#">O60481</a>
Reactivity	<b>Human, Mouse, Rat, Rabbit, Monkey, Horse, Bovine, Guinea Pig, Dog</b>
Host	<b>Goat</b>
Clonality	<b>Polyclonal</b>
Calculated MW	<b>51kDa KDa</b>

**ZIC3 Antibody (aa178-189) - Additional Information**

**Gene ID 7547**

**Other Names**

Zinc finger protein ZIC 3, Zinc finger protein 203, Zinc finger protein of the cerebellum 3, ZIC3, ZNF203

**Target/Specificity**

Human ZIC3. This antibody is expected to NOT cross-react with other ZIC proteins.

**Reconstitution & Storage**

Store at -20°C. Minimize freezing and thawing.

**Precautions**

ZIC3 Antibody (aa178-189) is for research use only and not for use in diagnostic or therapeutic procedures.

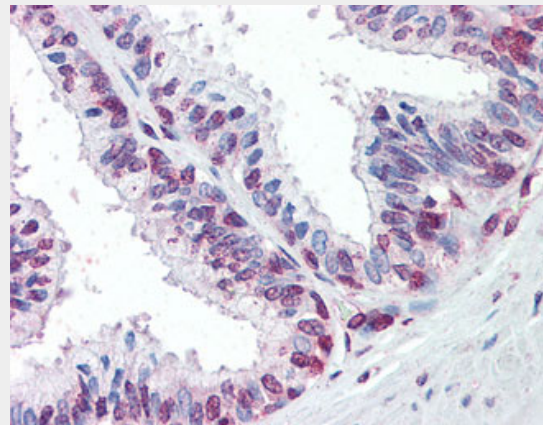
**ZIC3 Antibody (aa178-189) - Protein Information**

**Name ZIC3**

**Synonyms ZNF203**

**Function**

Acts as transcriptional activator. Required in the earliest stages in both axial midline



Anti-ZIC3 antibody IHC staining of human prostate.

**ZIC3 Antibody (aa178-189) - Background**

Acts as transcriptional activator. Required in the earliest stages in both axial midline development and left-right (LR) asymmetry specification. Binds to the minimal GLI-consensus sequence 5'-GGGTGGTC-3'.

**ZIC3 Antibody (aa178-189) - References**

- Gebbia M., et al. Nat. Genet. 17:305-308(1997).
- Salichs E., et al. PLoS Genet. 5:E1000397-E1000397(2009).
- Ross M.T., et al. Nature 434:325-337(2005).
- Zhu L., et al. Hum. Mutat. 29:99-105(2008).
- Bedard J.E., et al. PLoS ONE 6:E23755-E23755(2011).

development and left-right (LR) asymmetry specification. Binds to the minimal GLI-consensus sequence 5'-GGGTGGTC- 3'.

**Cellular Location**

Nucleus. Cytoplasm. Note=Localizes in the cytoplasm in presence of MDFIC overexpression (By similarity) Translocation to the nucleus requires KPNA1 or KPNA6.

**ZIC3 Antibody (aa178-189) - Protocols**

Provided below are standard protocols that you may find useful for product applications.

- [Western Blot](#)
- [Blocking Peptides](#)
- [Dot Blot](#)
- [Immunohistochemistry](#)
- [Immunofluorescence](#)
- [Immunoprecipitation](#)
- [Flow Cytometry](#)
- [Cell Culture](#)