

PLCG2 Antibody
Rabbit Polyclonal Antibody
Catalog # ALS15580

Specification

PLCG2 Antibody - Product Information

| | |
|-------------------|------------------------|
| Application | IHC, WB |
| Primary Accession | P16885 |
| Reactivity | Human |
| Host | Rabbit |
| Clonality | Polyclonal |
| Calculated MW | 148kDa KDa |

PLCG2 Antibody - Additional Information

Gene ID 5336

Other Names

1-phosphatidylinositol 4, 5-bisphosphate phosphodiesterase gamma-2, 3.1.4.11, Phosphoinositide phospholipase C-gamma-2, Phospholipase C-IV, PLC-IV, Phospholipase C-gamma-2, PLC-gamma-2, PLCG2

Target/Specificity

The antibody recognizes 139 kD human PLC gamma 1 & 2. Jurkat cell lysate can be used as a positive control. Reactivity to other species has not been determined.

Reconstitution & Storage

Store at -20°C. Aliquot to avoid freeze/thaw cycles. Store undiluted.

Precautions

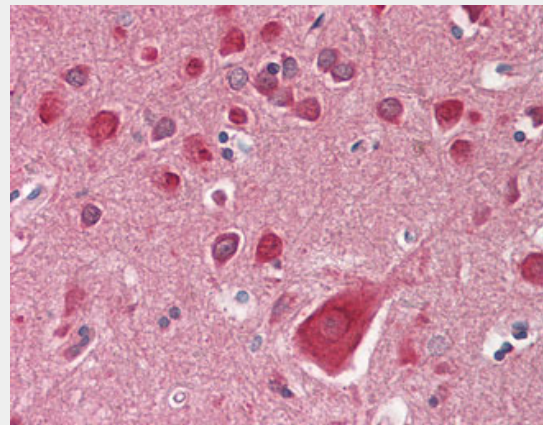
PLCG2 Antibody is for research use only and not for use in diagnostic or therapeutic procedures.

PLCG2 Antibody - Protein Information

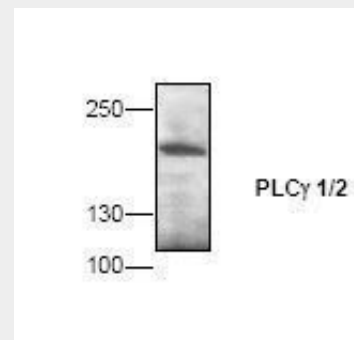
Name PLCG2 ([HGNC:9066](#))

Function

The production of the second messenger molecules diacylglycerol (DAG) and inositol 1,4,5-trisphosphate (IP3) is mediated by activated phosphatidylinositol-specific



Anti-PLCG2 antibody IHC staining of human brain, cortex.



Western blot of PLCG1 antibody in Jurkat cell lysate.

PLCG2 Antibody - Background

The production of the second messenger molecules diacylglycerol (DAG) and inositol 1,4,5-trisphosphate (IP3) is mediated by activated phosphatidylinositol-specific phospholipase C enzymes. It is a crucial enzyme in transmembrane signaling.

PLCG2 Antibody - References

Ohta S., et al. FEBS Lett. 242:31-35(1988).
Totoki Y., et al. Submitted (MAR-2005) to the EMBL/GenBank/DDBJ databases.
Kemmer D., et al. BMC Genomics 7:48-48(2006).

phospholipase C enzymes. It is a crucial enzyme in transmembrane signaling.

Martin J., et al. Nature 432:988-994(2004).
Mural R.J., et al. Submitted (SEP-2005) to the EMBL/GenBank/DDBJ databases.

PLCG2 Antibody - Protocols

Provided below are standard protocols that you may find useful for product applications.

- [Western Blot](#)
- [Blocking Peptides](#)
- [Dot Blot](#)
- [Immunohistochemistry](#)
- [Immunofluorescence](#)
- [Immunoprecipitation](#)
- [Flow Cytometry](#)
- [Cell Culture](#)