

RAB4A / RAB4 Antibody
Rabbit Polyclonal Antibody
 Catalog # ALS15444

Specification

RAB4A / RAB4 Antibody - Product Information

Application	WB, IHC
Primary Accession	P20338
Reactivity	Human, Mouse, Rat
Host	Rabbit
Clonality	Polyclonal
Calculated MW	24kDa KDa

RAB4A / RAB4 Antibody - Additional Information

Gene ID 5867

Other Names

Ras-related protein Rab-4A, RAB4A, RAB4

Target/Specificity

Detects ~26 kD protein.

Reconstitution & Storage

Short term 4°C, long term aliquot and store at -20°C, avoid freeze thaw cycles.

Precautions

RAB4A / RAB4 Antibody is for research use only and not for use in diagnostic or therapeutic procedures.

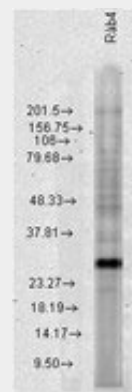
RAB4A / RAB4 Antibody - Protein Information

Name RAB4A

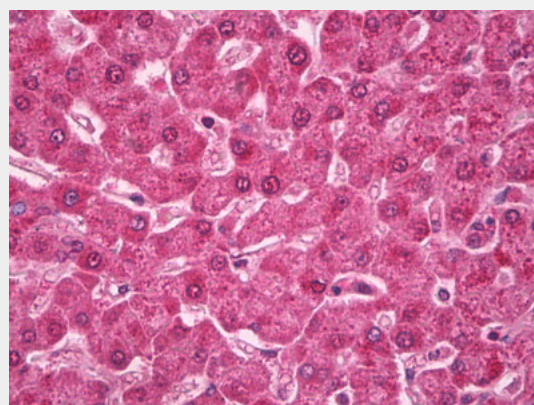
Synonyms RAB4

Function

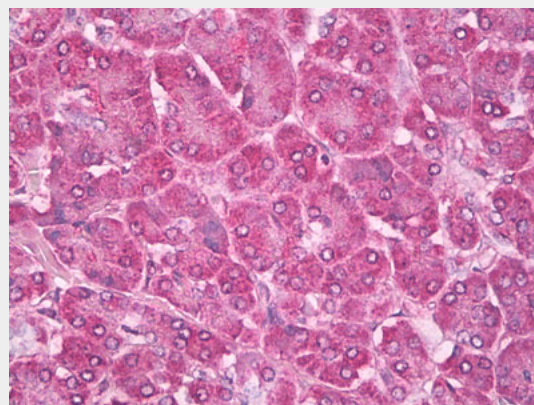
Small GTPase which cycles between an active GTP-bound and an inactive GDP-bound state (PubMed:<http://www.uniprot.org/citations/15907487> target="_blank">15907487, PubMed:<http://www.uniprot.org/citations/16034420> target="_blank">16034420). Involved in protein transport (PubMed:<http://www.uniprot.org/citations/15907487> target="_blank">15907487).



Rab4, Hela.



Anti-Ras-related protein Rab-4 (RAB4) antibody IHC of human liver.



Anti-Ras-related protein Rab-4 (RAB4) antibody IHC of human pancreas.

//www.uniprot.org/citations/29425100" target="_blank">29425100). Plays a role in vesicular traffic. Mediates VEGFR2 endosomal trafficking to enhance VEGFR2 signaling (PubMed:29425100). Acts as a regulator of platelet alpha- granule release during activation and aggregation of platelets (By similarity).

Cellular Location

Membrane; Peripheral membrane protein.
Cytoplasm Early endosome membrane {ECO:0000250|UniProtKB:P05714};
Peripheral membrane protein {ECO:0000250|UniProtKB:P05714}.
Recycling endosome membrane {ECO:0000250|UniProtKB:P05714};
Peripheral membrane protein {ECO:0000250|UniProtKB:P05714}.
Note=Generally associated with membranes. Cytoplasmic when phosphorylated by CDK1

Volume

50 µl

RAB4A / RAB4 Antibody - Background

Protein transport. Probably involved in vesicular traffic (By similarity).

RAB4A / RAB4 Antibody - References

Zahraoui A.,et al.J. Biol. Chem. 264:12394-12401(1989).
Nagy G.,et al.J. Biol. Chem. 281:34574-34591(2006).
Puhl H.L. III,et al.Submitted (APR-2002) to the EMBL/GenBank/DDBJ databases.
Ota T.,et al.Nat. Genet. 36:40-45(2004).
Gregory S.G.,et al.Nature 441:315-321(2006).

RAB4A / RAB4 Antibody - Protocols

Provided below are standard protocols that you may find useful for product applications.

- [Western Blot](#)
- [Blocking Peptides](#)
- [Dot Blot](#)
- [Immunohistochemistry](#)
- [Immunofluorescence](#)
- [Immunoprecipitation](#)
- [Flow Cytometry](#)
- [Cell Culture](#)