

KRT10 / CK10 / Cytokeratin 10 Antibody (clone DE-K10)
Mouse Monoclonal Antibody
Catalog # ALS15311

Specification

KRT10 / CK10 / Cytokeratin 10 Antibody (clone DE-K10) - Product Information

Application	IHC
Primary Accession	P13645
Reactivity	Human
Host	Mouse
Clonality	Monoclonal
Calculated MW	59kDa KDa

KRT10 / CK10 / Cytokeratin 10 Antibody (clone DE-K10) - Additional Information

Gene ID 3858

Other Names

Keratin, type I cytoskeletal 10,
Cytokeratin-10, CK-10, Keratin-10, K10,
KRT10, KPP

Target/Specificity

Reacts in immunoblots with the 56.6 kD cyto­keratin protein. Specifically recognizes cyto­keratin 10. Positive control: Squamous cell carcinoma.

Reconstitution & Storage

Short term 4°C, long term aliquot and store at -20°C, avoid freeze thaw cycles. Store undiluted.

Precautions

KRT10 / CK10 / Cytokeratin 10 Antibody (clone DE-K10) is for research use only and not for use in diagnostic or therapeutic procedures.

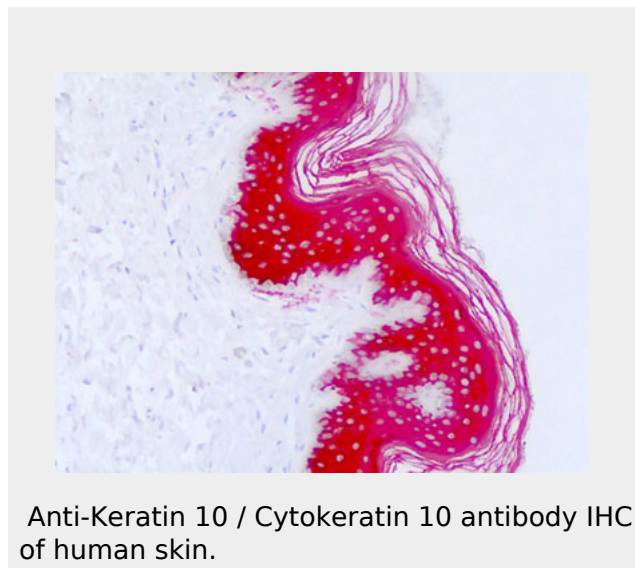
KRT10 / CK10 / Cytokeratin 10 Antibody (clone DE-K10) - Protein Information

Name KRT10

Synonyms KPP

Function

Plays a role in the establishment of the



KRT10 / CK10 / Cytokeratin 10 Antibody (clone DE-K10) - References

- Zhou X.M., et al. J. Biol. Chem. 263:15584-15589(1988).
Rieger M., et al. J. Mol. Biol. 204:841-856(1988).
Zody M.C., et al. Nature 440:1045-1049(2006).
Darmon M.Y., et al. Mol. Biol. Rep. 12:277-283(1987).
Rothnagel J.A., et al. J. Invest. Dermatol. 102:13-16(1994).

epidermal barrier on plantar skin.

Cellular Location

Secreted, extracellular space. Cell surface.

Note=Localized on the surface of desquamated nasal epithelial cells (PubMed:12427098). Localized on the surface of lung cell lines (PubMed:19627498)

Tissue Location

Seen in all suprabasal cell layers including stratum corneum. Expressed on the surface of lung cell lines (PubMed:19627498).

Volume

125 µl

KRT10 / CK10 / Cytokeratin 10 Antibody (clone DE-K10) - Protocols

Provided below are standard protocols that you may find useful for product applications.

- [Western Blot](#)
- [Blocking Peptides](#)
- [Dot Blot](#)
- [Immunohistochemistry](#)
- [Immunofluorescence](#)
- [Immunoprecipitation](#)
- [Flow Cytometry](#)
- [Cell Culture](#)