

EPB41L4B Antibody (Internal)
Goat Polyclonal Antibody
Catalog # ALS14950

Specification

EPB41L4B Antibody (Internal) - Product Information

| | |
|-------------------|-----------------------------------|
| Application | IHC |
| Primary Accession | Q9H329 |
| Reactivity | Human, Rabbit, Monkey, Dog |
| Host | Goat |
| Clonality | Polyclonal |
| Calculated MW | 100kDa KDa |

EPB41L4B Antibody (Internal) - Additional Information

Gene ID 54566

Other Names

Band 4.1-like protein 4B, FERM-containing protein CG1, Protein EHM2, EPB41L4B, EHM2

Target/Specificity

Human EPB41L4B. This antibody is expected to recognise both reported isoforms (NP_060894.2; NP_061987.3).

Reconstitution & Storage

Store at -20°C. Minimize freezing and thawing.

Precautions

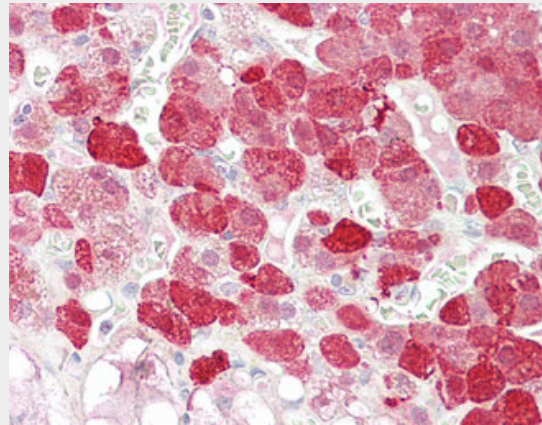
EPB41L4B Antibody (Internal) is for research use only and not for use in diagnostic or therapeutic procedures.

EPB41L4B Antibody (Internal) - Protein Information

Name EPB41L4B ([HGNC:19818](#))

Function

Up-regulates the activity of the Rho guanine nucleotide exchange factor ARHGEF18 (By similarity). Involved in the regulation of the circumferential actomyosin belt in epithelial cells (PubMed:<a href="http://www.uniprot.



Anti-EPB41L4B antibody IHC of human adrenal.

EPB41L4B Antibody (Internal) - References

Chadwick B.P.,et al.Mamm. Genome 11:81-83(2000).
Shimizu K.,et al.Genomics 65:113-120(2000).
Humphray S.J.,et al.Nature 429:369-374(2004).

org/citations/22006950" target="_blank">22006950). Promotes cellular adhesion, migration and motility in vitro and may play a role in wound healing (PubMed:23664528). May have a role in mediating cytoskeletal changes associated with steroid- induced cell differentiation (PubMed:14521927).

Cellular Location

Cytoplasm. Cell junction, tight junction
Note=Accumulates along apical cell-cell boundaries and is also detected in the cytoplasm in a punctate manner.

Tissue Location

Expressed at higher levels in acute wounds than chronic wounds with increased expression in healing wounds, especially at the leading wound edge (PubMed:23664528). Isoform 1 is highly expressed in brain. Isoform 2 is highly expressed in testis with lower levels in prostate and breast (PubMed:14521927)

EPB41L4B Antibody (Internal) - Protocols

Provided below are standard protocols that you may find useful for product applications.

- [Western Blot](#)
- [Blocking Peptides](#)
- [Dot Blot](#)
- [Immunohistochemistry](#)
- [Immunofluorescence](#)
- [Immunoprecipitation](#)
- [Flow Cytometry](#)
- [Cell Culture](#)