

APOA1 / Apolipoprotein A 1 Antibody
Rabbit Polyclonal Antibody
Catalog # ALS13930**Specification****APOA1 / Apolipoprotein A 1 Antibody - Product Information**

Application	IHC
Primary Accession	P02647
Reactivity	Mouse, Rat
Host	Rabbit
Clonality	Polyclonal
Calculated MW	31kDa KDa

APOA1 / Apolipoprotein A 1 Antibody - Additional Information**Gene ID** 335**Other Names**Apolipoprotein A-I, Apo-AI, ApoA-I,
Apolipoprotein A1, Proapolipoprotein A-I,
ProapoA-I, Truncated apolipoprotein A-I,
Apolipoprotein A-I(1-242), APOA1**Target/Specificity**

Recognizes mouse Apo AI. Does not react well with human Apo AI. Species cross-reactivity: rat.

Reconstitution & Storage

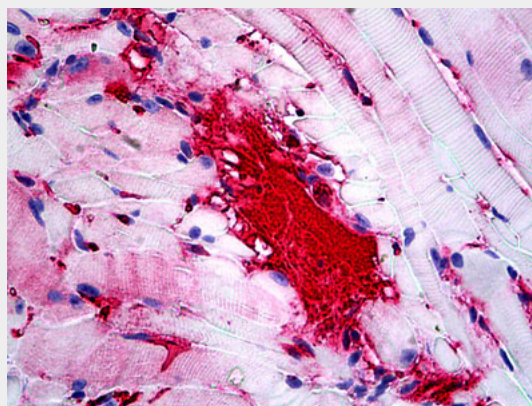
Long term: -20°C; Short term: +4°C. Avoid repeat freeze-thaw cycles.

Precautions

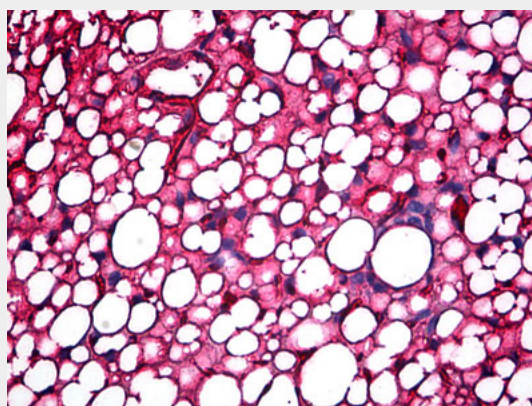
APOA1 / Apolipoprotein A 1 Antibody is for research use only and not for use in diagnostic or therapeutic procedures.

APOA1 / Apolipoprotein A 1 Antibody - Protein Information**Name** APOA1 ([HGNC:600](#))**Function**

Participates in the reverse transport of cholesterol from tissues to the liver for excretion by promoting cholesterol efflux from tissues and by acting as a cofactor for the lecithin cholesterol acyltransferase



Anti-Apolipoprotein A I antibody IHC of mouse muscle.



Anti-Apolipoprotein A I antibody IHC of mouse kidney, adipose.

APOA1 / Apolipoprotein A 1 Antibody - Background

Participates in the reverse transport of cholesterol from tissues to the liver for excretion by promoting cholesterol efflux from tissues and by acting as a cofactor for the lecithin cholesterol acyltransferase (LCAT). As part of the SPAP complex, activates spermatozoa motility.

APOA1 / Apolipoprotein A 1 Antibody - References

(LCAT). As part of the SPAP complex, activates spermatozoa motility.

Cellular Location
Secreted.

Tissue Location

Major protein of plasma HDL, also found in chylomicrons. Synthesized in the liver and small intestine. The oxidized form at Met-110 and Met-136 is increased in individuals with increased risk for coronary artery disease, such as in carrier of the eNOSa/b genotype and exposure to cigarette smoking. It is also present in increased levels in aortic lesions relative to native ApoA-I and increased levels are seen with increasing severity of disease

Shoulders C.C.,et al.Nucleic Acids Res. 11:2827-2837(1983).
Cheung P.,et al.Nucleic Acids Res. 11:3703-3715(1983).
Karathanasis S.K.,et al.Proc. Natl. Acad. Sci. U.S.A. 80:6147-6151(1983).
Seilhamer J.J.,et al.DNA 3:309-317(1984).
Sharpe C.R.,et al.Nucleic Acids Res. 12:3917-3932(1984).

APOA1 / Apolipoprotein A 1 Antibody - Protocols

Provided below are standard protocols that you may find useful for product applications.

- [Western Blot](#)
- [Blocking Peptides](#)
- [Dot Blot](#)
- [Immunohistochemistry](#)
- [Immunofluorescence](#)
- [Immunoprecipitation](#)
- [Flow Cytometry](#)
- [Cell Culture](#)