

**Mouse Human IgA Secondary Antibody (clone AD3)**  
**Mouse Monoclonal Antibody**  
**Catalog # ALS12932**

**Specification**

**Mouse Human IgA Secondary Antibody (clone AD3) - Product Information**

Application	<b>IHC</b>
Reactivity	<b>Human</b>
Host	<b>Mouse</b>
Clonality	<b>Monoclonal</b>

**Mouse Human IgA Secondary Antibody (clone AD3) - Additional Information**

**Target/Specificity**

Reacts with alpha-chain of human IgA1 and IgA2

**Reconstitution & Storage**

Short term 4°C, long term aliquot and store at -20°C, avoid freeze thaw cycles.

**Precautions**

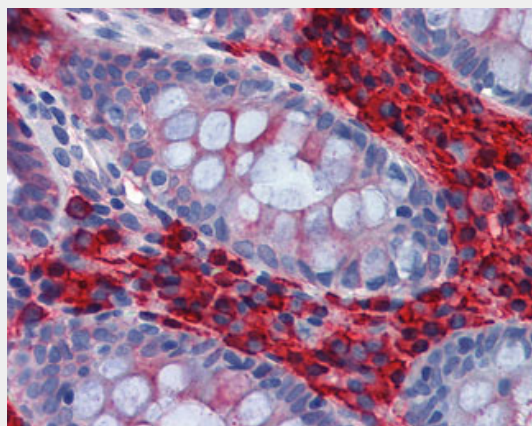
Mouse Human IgA Secondary Antibody (clone AD3) is for research use only and not for use in diagnostic or therapeutic procedures.

**Mouse Human IgA Secondary Antibody (clone AD3) - Protein Information**

**Mouse Human IgA Secondary Antibody (clone AD3) - Protocols**

Provided below are standard protocols that you may find useful for product applications.

- [Western Blot](#)
- [Blocking Peptides](#)
- [Dot Blot](#)
- [Immunohistochemistry](#)
- [Immunofluorescence](#)
- [Immunoprecipitation](#)
- [Flow Cytometry](#)
- [Cell Culture](#)



Anti-IgA antibody IHC of human colon.