

PLAP / Alkaline Phosphatase Antibody
Rabbit Polyclonal Antibody
Catalog # ALS12530

Specification

PLAP / Alkaline Phosphatase Antibody - Product Information

Application	IHC
Primary Accession	P05187
Reactivity	Human
Host	Rabbit
Clonality	Polyclonal
Calculated MW	58kDa KDa

PLAP / Alkaline Phosphatase Antibody - Additional Information

Gene ID 250

Other Names

Alkaline phosphatase, placental type, 3.1.3.1, Alkaline phosphatase Regan isozyme, Placental alkaline phosphatase 1, PLAP-1, ALPP, PLAP

Reconstitution & Storage

2°C to 8°C

Precautions

PLAP / Alkaline Phosphatase Antibody is for research use only and not for use in diagnostic or therapeutic procedures.

PLAP / Alkaline Phosphatase Antibody - Protein Information

Name ALPP

Synonyms PLAP

Cellular Location

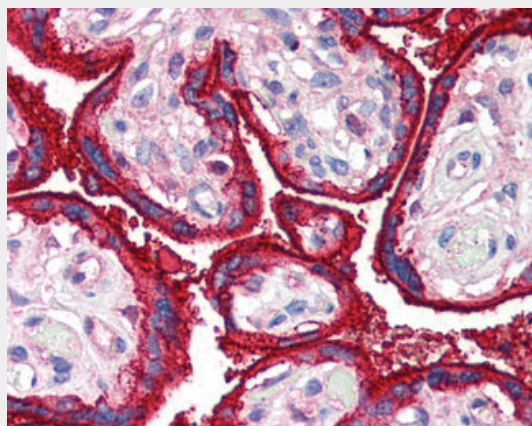
Cell membrane; Lipid-anchor, GPI-anchor.

Tissue Location

Detected in placenta (at protein level).

Volume

50 µl



Anti-ALPP antibody IHC of human placenta.

PLAP / Alkaline Phosphatase Antibody - References

- Knoll B.J., et al. J. Biol. Chem. 263:12020-12027(1988).
Millan J.L., et al. J. Biol. Chem. 261:3112-3115(1986).
Henthorn P.S., et al. Proc. Natl. Acad. Sci. U.S.A. 83:5597-5601(1986).
Hillier L.W., et al. Nature 434:724-731(2005).
Kam W., et al. Proc. Natl. Acad. Sci. U.S.A. 82:8715-8719(1985).

PLAP / Alkaline Phosphatase Antibody - Protocols

Provided below are standard protocols that you may find useful for product applications.

- [Western Blot](#)
- [Blocking Peptides](#)
- [Dot Blot](#)
- [Immunohistochemistry](#)
- [Immunofluorescence](#)
- [Immunoprecipitation](#)
- [Flow Cytometry](#)
- [Cell Culture](#)