

**CD5 Antibody (clone MEM-32)**  
**Mouse Monoclonal Antibody**  
**Catalog # ALS11967**

**Specification**

**CD5 Antibody (clone MEM-32) - Product Information**

Application	IHC
Primary Accession	<a href="#">P06127</a>
Reactivity	Human
Host	Mouse
Clonality	Monoclonal
Calculated MW	55kDa KDa

**CD5 Antibody (clone MEM-32) - Additional Information**

**Gene ID** 921

**Other Names**

T-cell surface glycoprotein CD5,  
Lymphocyte antigen T1/Leu-1, CD5, CD5,  
LEU1

**Target/Specificity**

Crude thymus membrane fraction

**Reconstitution & Storage**

Short term 4°C, long term aliquot and store at -20°C, avoid freeze thaw cycles.

**Precautions**

CD5 Antibody (clone MEM-32) is for research use only and not for use in diagnostic or therapeutic procedures.

**CD5 Antibody (clone MEM-32) - Protein Information**

**Name** CD5

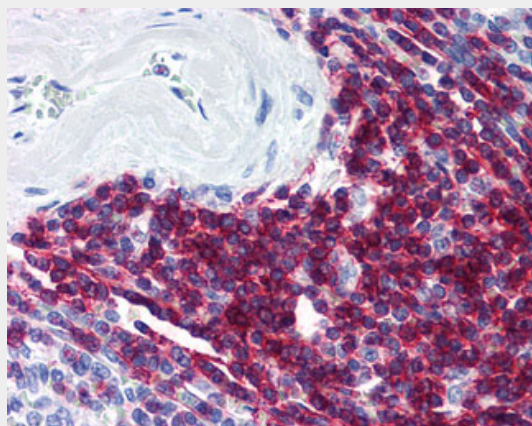
**Synonyms** LEU1

**Function**

May act as a receptor in regulating T-cell proliferation.

**Cellular Location**

Cell membrane; Single-pass type I membrane protein



Anti-CD5 antibody IHC of human spleen.

**CD5 Antibody (clone MEM-32) - Background**

May act as a receptor in regulating T-cell proliferation.

**CD5 Antibody (clone MEM-32) - References**

Jones N.H.,et al.Nature 323:346-349(1986).  
Calvo J.,et al.Tissue Antigens 47:257-261(1996).  
Livingston R.J.,et al.Submitted (OCT-2006) to the EMBL/GenBank/DDBJ databases.  
Ota T.,et al.Nat. Genet. 36:40-45(2004).  
Taylor T.D.,et al.Nature 440:497-500(2006).

## CD5 Antibody (clone MEM-32) - Protocols

Provided below are standard protocols that you may find useful for product applications.

- [Western Blot](#)
- [Blocking Peptides](#)
- [Dot Blot](#)
- [Immunohistochemistry](#)
- [Immunofluorescence](#)
- [Immunoprecipitation](#)
- [Flow Cytometry](#)
- [Cell Culture](#)