

GPRC5C Antibody (Extracellular Domain)
Rabbit Polyclonal Antibody
Catalog # ALS10728

Specification

**GPRC5C Antibody (Extracellular Domain) -
Product Information**

Application	IHC
Primary Accession	Q9NQ84
Reactivity	Human
Host	Rabbit
Clonality	Polyclonal
Calculated MW	48kDa KDa

**GPRC5C Antibody (Extracellular Domain) -
Additional Information**

Gene ID 55890

Other Names

G-protein coupled receptor family C group 5 member C, Retinoic acid-induced gene 3 protein, RAIG-3, GPRC5C, RAIG3

Target/Specificity

Human GPRC5C. BLAST analysis of the peptide immunogen showed no homology with other human proteins.

Reconstitution & Storage

Long term: -70°C; Short term: +4°C

Precautions

GPRC5C Antibody (Extracellular Domain) is for research use only and not for use in diagnostic or therapeutic procedures.

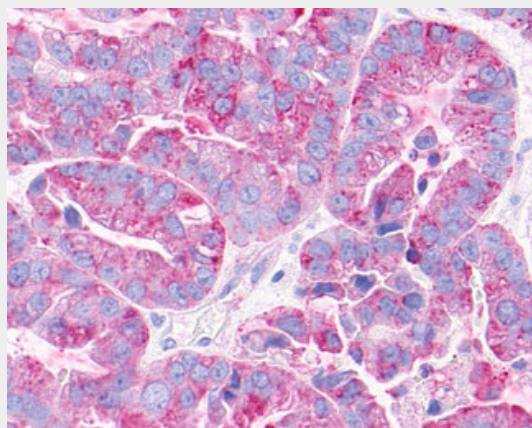
GPRC5C Antibody (Extracellular Domain) - Protein Information

Name GPRC5C

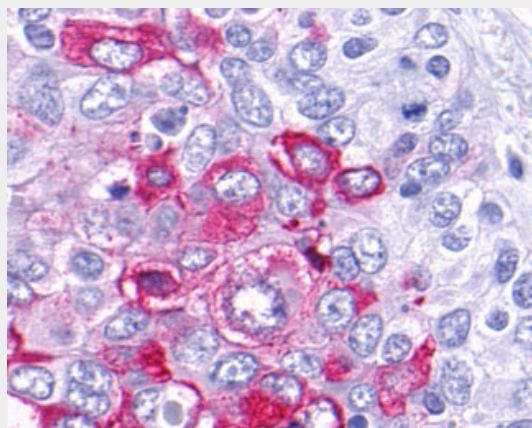
Synonyms RAIG3

Function

This retinoic acid-inducible G-protein coupled receptor provide evidence for a possible interaction between retinoid and G-protein signaling pathways.



Anti-GPRC5C antibody IHC of human Ovary, Carcinoma.



Anti-GPRC5C antibody IHC of human Lung, Non-Small Cell Carcinoma.

**GPRC5C Antibody (Extracellular Domain) -
Background**

This retinoic acid-inducible G-protein coupled receptor provide evidence for a possible interaction between retinoid and G-protein signaling pathways.

**GPRC5C Antibody (Extracellular Domain) -
References**

Robbins M.J.,et al.Genomics 67:8-18(2000).

Cellular Location

Cell membrane; Multi-pass membrane protein. Cytoplasmic vesicle membrane; Multi-pass membrane protein
Note=Localized in the plasma membrane and perinuclear vesicles

Braeuner-Osborne H., et al. *Biochim. Biophys. Acta* 1518:237-248(2001).

Kalnina N., et al. Submitted (MAY-2003) to the EMBL/GenBank/DDBJ databases.

Ota T., et al. *Nat. Genet.* 36:40-45(2004).

Otsuki T., et al. *DNA Res.* 12:117-126(2005).

Tissue Location

Expression is highest in the periphery, particularly in the stomach, but also in the kidney, liver, pancreas, and prostate. In brain, levels of expression are generally lower than in the periphery, with the exception of cerebellum, spinal cord, and dorsal root ganglia (DRG).

Volume

50 µl

GPRC5C Antibody (Extracellular Domain) - Protocols

Provided below are standard protocols that you may find useful for product applications.

- [Western Blot](#)
- [Blocking Peptides](#)
- [Dot Blot](#)
- [Immunohistochemistry](#)
- [Immunofluorescence](#)
- [Immunoprecipitation](#)
- [Flow Cytometry](#)
- [Cell Culture](#)