

PTPRM / PTP Mu Antibody (Internal)
Rabbit Polyclonal Antibody
Catalog # ALS10600

Specification

PTPRM / PTP Mu Antibody (Internal) - Product Information

Application	IHC
Primary Accession	P28827
Reactivity	Human, Mouse, Rabbit, Hamster, Horse
Host	Rabbit
Clonality	Polyclonal
Calculated MW	164kDa KDa

PTPRM / PTP Mu Antibody (Internal) - Additional Information

Gene ID 5797

Other Names

Receptor-type tyrosine-protein phosphatase mu, Protein-tyrosine phosphatase mu, R-PTP-mu, 3.1.3.48, PTPRM, PTPRL1

Target/Specificity

Human PTPRM. BLAST analysis of the peptide immunogen showed no homology with other human proteins.

Reconstitution & Storage

Long term: -70°C; Short term: +4°C

Precautions

PTPRM / PTP Mu Antibody (Internal) is for research use only and not for use in diagnostic or therapeutic procedures.

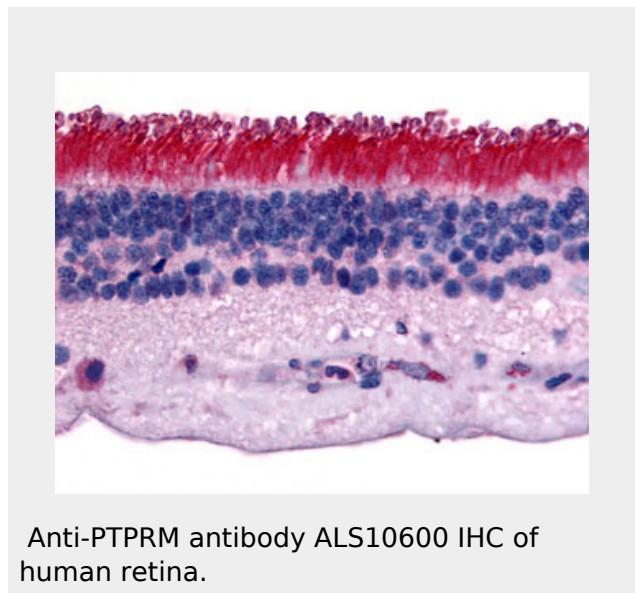
PTPRM / PTP Mu Antibody (Internal) - Protein Information

Name PTPRM

Synonyms PTPRL1

Function

Involved in cell-cell adhesion through homophilic interactions. May play a key role in signal transduction and growth control.



Anti-PTPRM antibody ALS10600 IHC of human retina.

PTPRM / PTP Mu Antibody (Internal) - Background

Involved in cell-cell adhesion through homophilic interactions. May play a key role in signal transduction and growth control.

PTPRM / PTP Mu Antibody (Internal) - References

- Gebbink M.F.B.G., et al. FEBS Lett. 290:123-130(1991).
- Nusbaum C., et al. Nature 437:551-555(2005).
- Mural R.J., et al. Submitted (SEP-2005) to the EMBL/GenBank/DDBJ databases.
- Liu T., et al. J. Proteome Res. 4:2070-2080(2005).
- Dephoure N., et al. Proc. Natl. Acad. Sci. U.S.A. 105:10762-10767(2008).

Cellular Location

Membrane; Single-pass type I membrane protein.

Volume

50 μ l

**PTPRM / PTP Mu Antibody (Internal) -
Protocols**

Provided below are standard protocols that you may find useful for product applications.

- [Western Blot](#)
- [Blocking Peptides](#)
- [Dot Blot](#)
- [Immunohistochemistry](#)
- [Immunofluorescence](#)
- [Immunoprecipitation](#)
- [Flow Cytometry](#)
- [Cell Culture](#)