

**GPR82 Antibody (Cytoplasmic Domain)**  
**Rabbit Polyclonal Antibody**  
Catalog # ALS10572

**Specification**

**GPR82 Antibody (Cytoplasmic Domain) - Product Information**

Application	<b>IHC</b>
Primary Accession	<a href="#">Q96P67</a>
Reactivity	<b>Human, Monkey, Pig</b>
Host	<b>Rabbit</b>
Clonality	<b>Polyclonal</b>
Calculated MW	<b>38kDa KDa</b>

**GPR82 Antibody (Cytoplasmic Domain) - Additional Information**

**Gene ID** 27197

**Other Names**

Probable G-protein coupled receptor 82, GPR82

**Target/Specificity**

Human GPR82. BLAST analysis of the peptide immunogen showed no homology with other human proteins.

**Reconstitution & Storage**

Long term: -70°C; Short term: +4°C

**Precautions**

GPR82 Antibody (Cytoplasmic Domain) is for research use only and not for use in diagnostic or therapeutic procedures.

**GPR82 Antibody (Cytoplasmic Domain) - Protein Information**

**Name** GPR82

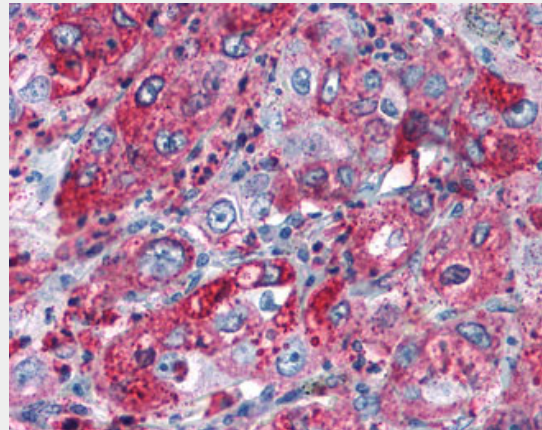
**Function**

Orphan receptor.

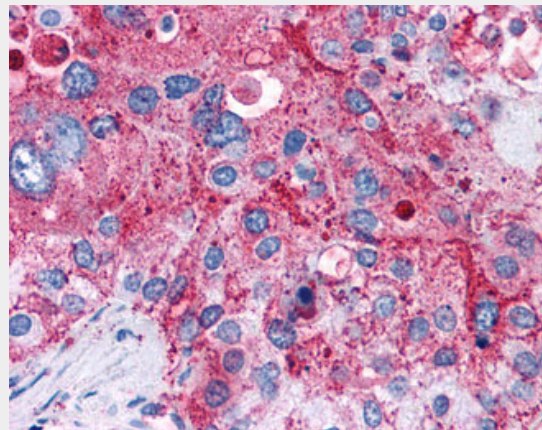
**Cellular Location**

Cell membrane; Multi-pass membrane protein.

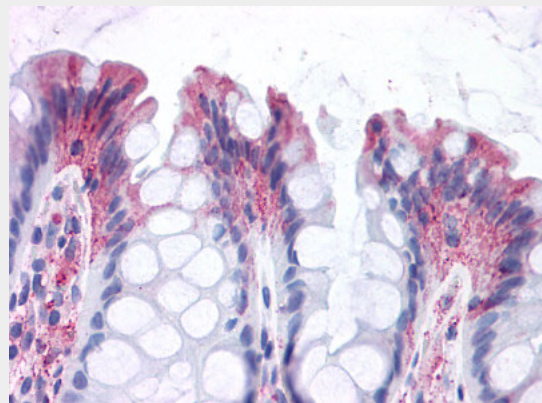
**Volume**



Anti-GPR82 antibody IHC of human Lung, Adenocarcinoma.



Anti-GPR82 antibody IHC of human Lung, Adenocarcinoma.



50 µl

Anti-GPR82 antibody ALS10572 IHC of human colon.

### **GPR82 Antibody (Cytoplasmic Domain) - Protocols**

Provided below are standard protocols that you may find useful for product applications.

- [Western Blot](#)
- [Blocking Peptides](#)
- [Dot Blot](#)
- [Immunohistochemistry](#)
- [Immunofluorescence](#)
- [Immunoprecipitation](#)
- [Flow Cytometry](#)
- [Cell Culture](#)

### **GPR82 Antibody (Cytoplasmic Domain) - Background**

Orphan receptor.

### **GPR82 Antibody (Cytoplasmic Domain) - References**

Lee D.K.,et al.Gene 275:83-91(2001).  
von Kugelgen I.,et al.Submitted (AUG-2003) to the EMBL/GenBank/DDBJ databases.  
Kaighin V.A.,et al.Submitted (DEC-2011) to the EMBL/GenBank/DDBJ databases.  
Suwa M.,et al.Submitted (JUL-2001) to the EMBL/GenBank/DDBJ databases.  
Ota T.,et al.Nat. Genet. 36:40-45(2004).