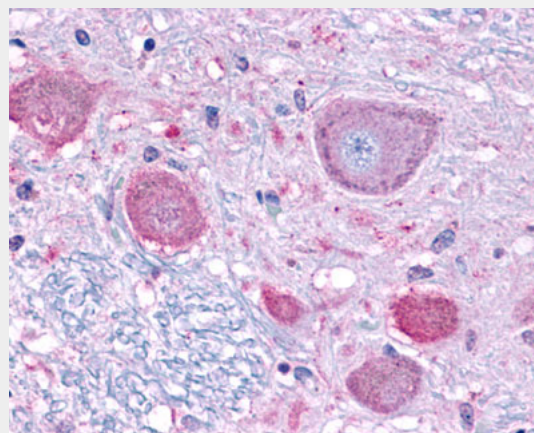


NPFFR1 / GPR147 Antibody (C-Terminus)
Rabbit Polyclonal Antibody
Catalog # ALS10464**Specification****NPFFR1 / GPR147 Antibody (C-Terminus) -
Product Information**

Application	IHC
Primary Accession	O9GZ06
Reactivity	Human
Host	Rabbit
Clonality	Polyclonal
Calculated MW	48kDa KDa

**NPFFR1 / GPR147 Antibody (C-Terminus) -
Additional Information****Gene ID** 64106**Other Names**Neuropeptide FF receptor 1, G-protein
coupled receptor 147, RFamide-related
peptide receptor OT7T022, NPFFR1,
GPR147, NPFF1**Target/Specificity**Human NPFF1 Receptor. BLAST analysis of
the peptide immunogen showed no
homology with other human proteins.**Reconstitution & Storage**

Long term: -70°C; Short term: +4°C

PrecautionsNPFFR1 / GPR147 Antibody (C-Terminus) is
for research use only and not for use in
diagnostic or therapeutic procedures.**NPFFR1 / GPR147 Antibody (C-Terminus) - Protein
Information****Name** NPFFR1**Synonyms** GPR147, NPFF1**Function**Receptor for NPAF (A-18-F-amide) and NPFF
(F-8-F-amide) neuropeptides, also known as
morphine-modulating peptides. Can also be
activated by a variety of naturally occurringAnti-NPFF1 Receptor antibody ALS10464 IHC
of human brain, neurons.**NPFFR1 / GPR147 Antibody (C-Terminus) -
Background**Receptor for NPAF (A-18-F-amide) and NPFF
(F-8-F-amide) neuropeptides, also known as
morphine-modulating peptides. Can also be
activated by a variety of naturally occurring or
synthetic FMRF-amide like ligands. This
receptor mediates its action by association
with G proteins that activate a
phosphatidylinositol- calcium second
messenger system.**NPFFR1 / GPR147 Antibody (C-Terminus) -
References**

- Bonini J.A., et al. *J. Biol. Chem.*
275:39324-39331(2000).
Hinuma S., et al. *Nat. Cell Biol.* 2:703-708(2000).
Liu Q., et al. Submitted (DEC-2000) to the
EMBL/GenBank/DDBJ databases.
Suwa M., et al. Submitted (JUL-2001) to the
EMBL/GenBank/DDBJ databases.
Kaighin V.A., et al. Submitted (DEC-2007) to the
EMBL/GenBank/DDBJ databases.

or synthetic FMRF-amide like ligands. This receptor mediates its action by association with G proteins that activate a phosphatidylinositol-calcium second messenger system.

Cellular Location

Cell membrane; Multi-pass membrane protein.

Volume

50 µl

NPFFR1 / GPR147 Antibody (C-Terminus) - Protocols

Provided below are standard protocols that you may find useful for product applications.

- [Western Blot](#)
- [Blocking Peptides](#)
- [Dot Blot](#)
- [Immunohistochemistry](#)
- [Immunofluorescence](#)
- [Immunoprecipitation](#)
- [Flow Cytometry](#)
- [Cell Culture](#)