

**PTGER4 / EP4 Antibody (C-Terminus)**  
**Rabbit Polyclonal Antibody**  
**Catalog # ALS10106**

**Specification**

**PTGER4 / EP4 Antibody (C-Terminus) - Product Information**

Application	IHC
Primary Accession	<a href="#">P35408</a>
Reactivity	Human, Mouse, Hamster, Monkey, Horse, Bovine, Dog
Host	Rabbit
Clonality	Polyclonal
Calculated MW	53kDa KDa

**PTGER4 / EP4 Antibody (C-Terminus) - Additional Information**

**Gene ID 5734**

**Other Names**

Prostaglandin E2 receptor EP4 subtype, PGE receptor EP4 subtype, PGE2 receptor EP4 subtype, Prostanoid EP4 receptor, PTGER4, PTGER2

**Target/Specificity**

Human PTGER4 / EP4. BLAST analysis of the peptide immunogen showed no homology with other human proteins.

**Reconstitution & Storage**

Long term: -70°C; Short term: +4°C

**Precautions**

PTGER4 / EP4 Antibody (C-Terminus) is for research use only and not for use in diagnostic or therapeutic procedures.

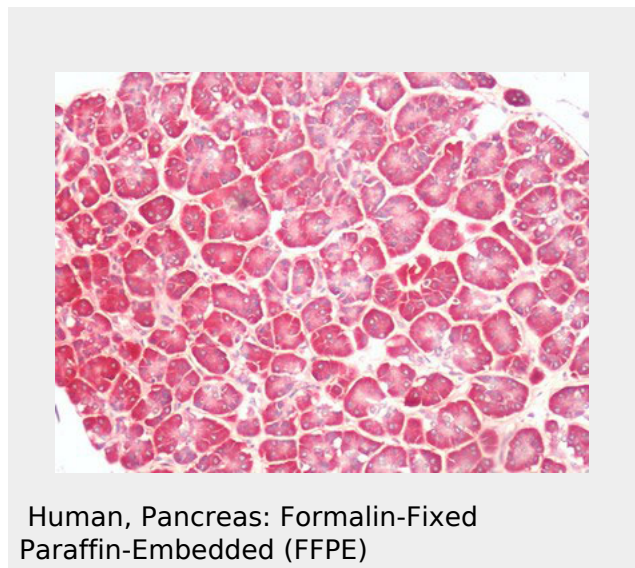
**PTGER4 / EP4 Antibody (C-Terminus) - Protein Information**

**Name** PTGER4

**Synonyms** PTGER2

**Function**

Receptor for prostaglandin E2 (PGE2). The



**PTGER4 / EP4 Antibody (C-Terminus) - Background**

Receptor for prostaglandin E2 (PGE2). The activity of this receptor is mediated by G(s) proteins that stimulate adenylate cyclase. Has a relaxing effect on smooth muscle. May play an important role in regulating renal hemodynamics, intestinal epithelial transport, adrenal aldosterone secretion, and uterine function.

**PTGER4 / EP4 Antibody (C-Terminus) - References**

Bastien L.,et al.J. Biol. Chem. 269:11873-11877(1994).  
An S.,et al.Biochem. Biophys. Res. Commun. 197:263-270(1993).  
Foord S.M.,et al.Genomics 35:182-188(1996).  
Mori K.,et al.J. Mol. Med. 74:333-336(1996).  
Kopatz S.A.,et al.Submitted (OCT-2003) to the EMBL/GenBank/DBJ databases.

activity of this receptor is mediated by G(s) proteins that stimulate adenylate cyclase. Has a relaxing effect on smooth muscle. May play an important role in regulating renal hemodynamics, intestinal epithelial transport, adrenal aldosterone secretion, and uterine function.

**Cellular Location**

Cell membrane; Multi-pass membrane protein.

**Tissue Location**

High in intestine and in peripheral blood mononuclear cells; low in lung, kidney, thymus, uterus, vasculature and brain. Not found in liver, heart, retina or skeletal muscle

**Volume**

50 µl

**PTGER4 / EP4 Antibody (C-Terminus) - Protocols**

Provided below are standard protocols that you may find useful for product applications.

- [Western Blot](#)
- [Blocking Peptides](#)
- [Dot Blot](#)
- [Immunohistochemistry](#)
- [Immunofluorescence](#)
- [Immunoprecipitation](#)
- [Flow Cytometry](#)
- [Cell Culture](#)