

**CNR2 / CB2 Antibody (Internal)**  
**Rabbit Polyclonal Antibody**  
**Catalog # ALS10013**

**Specification**

**CNR2 / CB2 Antibody (Internal) - Product Information**

Application	<b>IHC</b>
Primary Accession	<a href="#">P34972</a>
Reactivity	<b>Human</b>
Host	<b>Rabbit</b>
Clonality	<b>Polyclonal</b>
Calculated MW	<b>40kDa KDa</b>

**CNR2 / CB2 Antibody (Internal) - Additional Information**

**Gene ID 1269**

**Other Names**

Cannabinoid receptor 2, CB-2, CB2, hCB2, CX5, CNR2, CB2A, CB2B

**Target/Specificity**

Human CNR2 / CB2. BLAST analysis of the peptide immunogen showed no homology with other human proteins, except PROS1 (47%).

**Reconstitution & Storage**

Long term: -70°C; Short term: +4°C

**Precautions**

CNR2 / CB2 Antibody (Internal) is for research use only and not for use in diagnostic or therapeutic procedures.

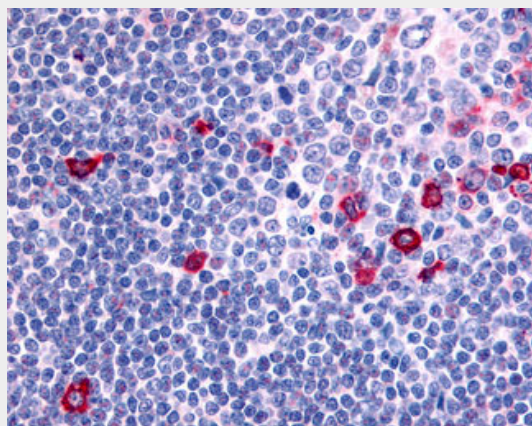
**CNR2 / CB2 Antibody (Internal) - Protein Information**

**Name CNR2**

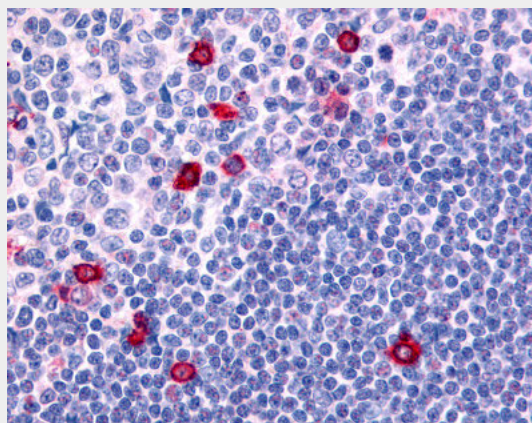
**Synonyms CB2A, CB2B**

**Function**

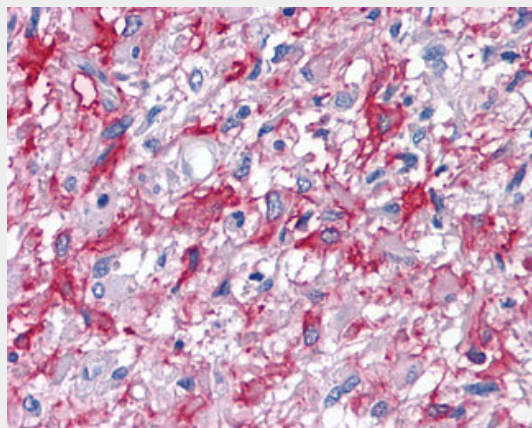
Heterotrimeric G protein-coupled receptor for endocannabinoid 2-arachidonoylglycerol mediating inhibition of adenylate cyclase. May function in inflammatory response, nociceptive transmission and bone



Anti-CNR2 / CB2 antibody IHC of human tonsil.



Anti-CNR2 / CB2 antibody ALS10013 IHC of human germinal center and mantle zone.



homeostasis.

#### Cellular Location

Cell membrane; Multi-pass membrane protein. Cell projection, dendrite. Perikaryon  
Note=Localizes to apical dendrite of pyramidal neurons.

#### Tissue Location

Preferentially expressed in cells of the immune system with higher expression in B-cells and NK cells (at protein level). Expressed in skin in suprabasal layers and hair follicles (at protein level). Highly expressed in tonsil and to a lower extent in spleen, peripheral blood mononuclear cells, and thymus. PubMed:14657172 could not detect expression in normal brain. Expressed in brain by perivascular microglial cells and dorsal root ganglion sensory neurons (at protein level). Two isoforms are produced by alternative promoter usage and differ only in the 5' UTR: isoform CB2A is observed predominantly in testis with some expression in brain, while isoform CB2B is predominant in spleen and leukocytes

#### Volume

50 µl

#### CNR2 / CB2 Antibody (Internal) - Protocols

Provided below are standard protocols that you may find useful for product applications.

- [Western Blot](#)
- [Blocking Peptides](#)
- [Dot Blot](#)
- [Immunohistochemistry](#)
- [Immunofluorescence](#)
- [Immunoprecipitation](#)
- [Flow Cytometry](#)
- [Cell Culture](#)

Anti-CNR2 / CB2 antibody IHC of human Brain, Glioblastoma.

#### CNR2 / CB2 Antibody (Internal) - Background

Heterotrimeric G protein-coupled receptor for endocannabinoid 2-arachidonoylglycerol mediating inhibition of adenylate cyclase. May function in inflammatory response, nociceptive transmission and bone homeostasis.

#### CNR2 / CB2 Antibody (Internal) - References

Munro S., et al. Nature 365:61-65(1993).  
Liu Q.-R., et al. Genes Brain Behav. 8:519-530(2009).  
Bruess M., et al. Submitted (FEB-2003) to the EMBL/GenBank/DDBJ databases.  
Warren C.N., et al. Submitted (FEB-2003) to the EMBL/GenBank/DDBJ databases.  
Saravanan T., et al. Submitted (NOV-2005) to the EMBL/GenBank/DDBJ databases.