

MAGEA9B Antibody - N-terminal region
Rabbit Polyclonal Antibody
Catalog # AI16021

Specification

MAGEA9B Antibody - N-terminal region - Product Information

| | |
|-------------------|------------------------------|
| Application | WB |
| Primary Accession | P43362 |
| Other Accession | XP_005278251 |
| Reactivity | Human |
| Predicted | Human |
| Host | Rabbit |
| Clonality | Polyclonal |
| Calculated MW | 34kDa KDa |

MAGEA9B Antibody - N-terminal region - Additional Information

Gene ID 4108;728269

Alias Symbol **MAGEA9B,**
Other Names
Melanoma-associated antigen 9,
Cancer/testis antigen 1.9, CT1.9, MAGE-9
antigen, MAGEA9, MAGE9, MAGEA9A

Format

Liquid. Purified antibody supplied in 1x PBS buffer with 0.09% (w/v) sodium azide and 2% sucrose.

Reconstitution & Storage

Add 50 μ l of distilled water. Final Anti-MAGEA9B antibody concentration is 1 mg/ml in PBS buffer with 2% sucrose. For longer periods of storage, store at -20°C. Avoid repeat freeze-thaw cycles.

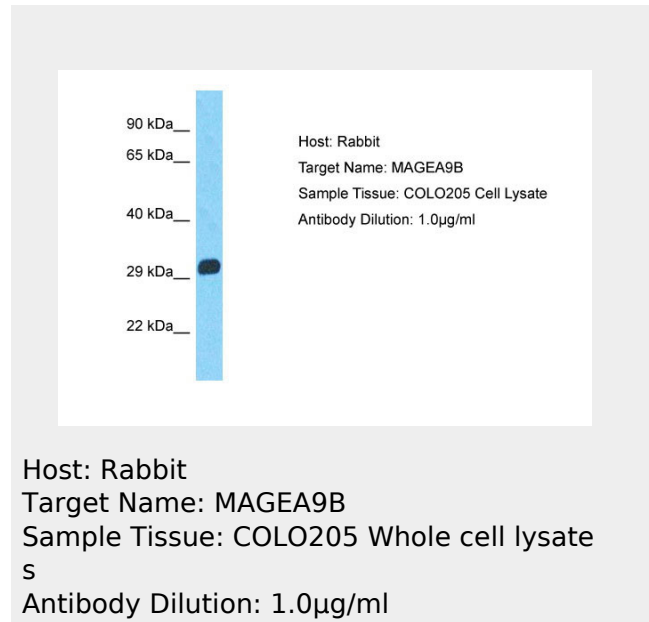
Precautions

MAGEA9B Antibody - N-terminal region is for research use only and not for use in diagnostic or therapeutic procedures.

MAGEA9B Antibody - N-terminal region - Protein Information

Name MAGEA9

Synonyms MAGE9, MAGEA9A



Host: Rabbit
Target Name: MAGEA9B
Sample Tissue: COLO205 Whole cell lysate
Antibody Dilution: 1.0µg/ml

MAGEA9B Antibody - N-terminal region - Background

Not known, though may play a role in embryonal development and tumor transformation or aspects of tumor progression.

MAGEA9B Antibody - N-terminal region - References

- De Plaen E., et al. Immunogenetics 40:360-369(1994).
- Timms K.M., et al. Hum. Mol. Genet. 6:479-486(1997).
- Zhu J., et al. Submitted (MAY-2003) to the EMBL/GenBank/DDBJ databases.
- Ota T., et al. Nat. Genet. 36:40-45(2004).
- Mural R.J., et al. Submitted (JUL-2005) to the EMBL/GenBank/DDBJ databases.

Function

Not known, though may play a role in embryonal development and tumor transformation or aspects of tumor progression.

Tissue Location

Expressed in many tumors of several types, such as melanoma, head and neck squamous cell carcinoma, lung carcinoma and breast carcinoma, but not in normal tissues except for testes and placenta

**MAGEA9B Antibody - N-terminal region -
Protocols**

Provided below are standard protocols that you may find useful for product applications.

- [Western Blot](#)
- [Blocking Peptides](#)
- [Dot Blot](#)
- [Immunohistochemistry](#)
- [Immunofluorescence](#)
- [Immunoprecipitation](#)
- [Flow Cytometry](#)
- [Cell Culture](#)