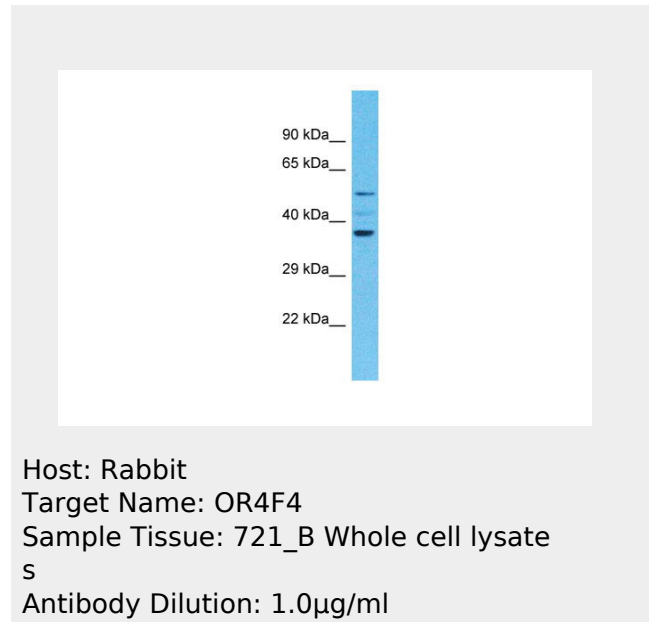


OR4F4 Antibody - C-terminal region
Rabbit Polyclonal Antibody
Catalog # AI15912

Specification

OR4F4 Antibody - C-terminal region - Product Information

Application	WB
Primary Accession	Q96R69
Other Accession	NM_001004195 , NP_001004195
Reactivity	Human, Mouse, Rat, Rabbit, Pig, Horse, Bovine, Guinea Pig, Dog
Predicted	Human, Mouse, Rat, Rabbit, Pig, Horse, Bovine, Guinea Pig, Dog
Host	Rabbit
Clonality	Polyclonal
Calculated MW	34kDa KDa



OR4F4 Antibody - C-terminal region - Additional Information

Gene ID 26682

Alias Symbol **OLA-7501, OR4F18**

Other Names

Olfactory receptor 4F4, HS14a-1-A,
Olfactory receptor OR19-3, OR4F4

Format

Liquid. Purified antibody supplied in 1x PBS buffer with 0.09% (w/v) sodium azide and 2% sucrose.

Reconstitution & Storage

Add 50 ul of distilled water. Final anti-OR4F4 antibody concentration is 1 mg/ml in PBS buffer with 2% sucrose. For longer periods of storage, store at 20°C. Avoid repeat freeze-thaw cycles.

Precautions

OR4F4 Antibody - C-terminal region is for research use only and not for use in diagnostic or therapeutic procedures.

OR4F4 Antibody - C-terminal region - Background

Odorant receptor.

OR4F4 Antibody - C-terminal region - References

- Trask B.J.,et al.Hum. Mol. Genet. 7:13-26(1998).
- Fuchs T.,et al.Genomics 80:295-302(2002).
- Malnic B.,et al.Proc. Natl. Acad. Sci. U.S.A. 101:2584-2589(2004).
- Malnic B.,et al.Proc. Natl. Acad. Sci. U.S.A. 101:7205-7205(2004).

OR4F4 Antibody - C-terminal region - Protein Information

Name OR4F4

Function

Odorant receptor.

Cellular Location

Cell membrane; Multi-pass membrane protein.

OR4F4 Antibody - C-terminal region - Protocols

Provided below are standard protocols that you may find useful for product applications.

- [Western Blot](#)
- [Blocking Peptides](#)
- [Dot Blot](#)
- [Immunohistochemistry](#)
- [Immunofluorescence](#)
- [Immunoprecipitation](#)
- [Flow Cytometry](#)
- [Cell Culture](#)