

**CCDC34 Antibody - C-terminal region**  
**Rabbit Polyclonal Antibody**  
**Catalog # AI15710**

**Specification**

**CCDC34 Antibody - C-terminal region - Product Information**

Application **WB**  
Primary Accession [Q96HJ3-2](#)  
Other Accession [NM\\_080654](#),  
[NP\\_542385](#)  
Reactivity **Human, Mouse, Rat, Rabbit, Pig, Horse, Yeast, Bovine, Guinea Pig, Dog**  
Predicted **Human, Mouse, Rat, Rabbit, Pig, Horse, Yeast, Bovine, Guinea Pig, Dog**  
Host **Rabbit**  
Clonality **Polyclonal**  
Calculated MW **25kDa KDa**

**CCDC34 Antibody - C-terminal region - Additional Information**

Alias Symbol **NY-REN-41, RAMA3**

**Format**

Liquid. Purified antibody supplied in 1x PBS buffer with 0.09% (w/v) sodium azide and 2% sucrose.

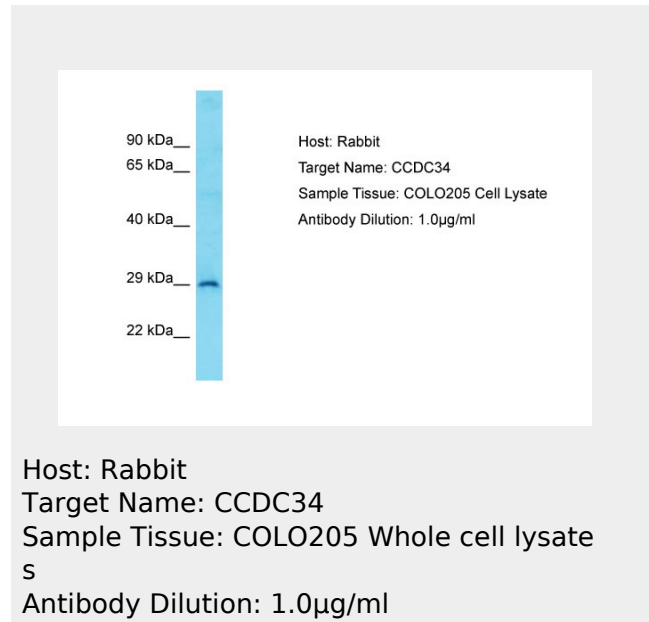
**Reconstitution & Storage**

Add 50  $\mu$ l of distilled water. Final Anti-CCDC34 antibody concentration is 1 mg/ml in PBS buffer with 2% sucrose. For longer periods of storage, store at -20°C. Avoid repeat freeze-thaw cycles.

**Precautions**

CCDC34 Antibody - C-terminal region is for research use only and not for use in diagnostic or therapeutic procedures.

**CCDC34 Antibody - C-terminal region - Protein Information**



## **CCDC34 Antibody - C-terminal region - Protocols**

Provided below are standard protocols that you may find useful for product applications.

- [Western Blot](#)
- [Blocking Peptides](#)
- [Dot Blot](#)
- [Immunohistochemistry](#)
- [Immunofluorescence](#)
- [Immunoprecipitation](#)
- [Flow Cytometry](#)
- [Cell Culture](#)