

SPATA5L1 Antibody - C-terminal region
Rabbit Polyclonal Antibody
Catalog # AI15668

Specification

SPATA5L1 Antibody - C-terminal region - Product Information

Application	WB
Primary Accession	Q9BVQ7
Other Accession	NM_024063 , NP_076968
Reactivity	Human, Rat, Rabbit, Pig, Bovine, Dog
Predicted	Human, Rat, Rabbit, Pig, Bovine, Dog
Host	Rabbit
Clonality	Polyclonal
Calculated MW	80kDa KDa

SPATA5L1 Antibody - C-terminal region - Additional Information

Gene ID 79029

Other Names

Spermatogenesis-associated protein 5-like protein 1, SPATA5L1

Format

Liquid. Purified antibody supplied in 1x PBS buffer with 0.09% (w/v) sodium azide and 2% sucrose.

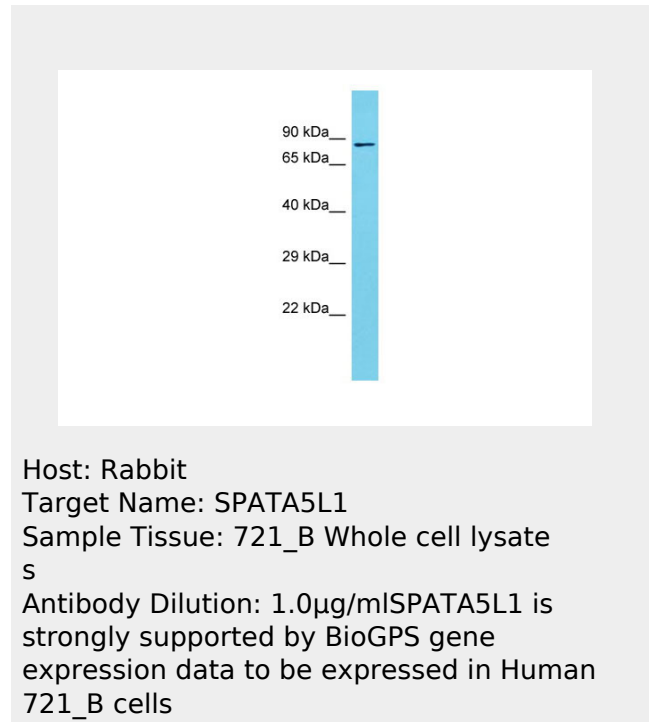
Reconstitution & Storage

Add 50 ul of distilled water. Final anti-SPATA5L1 antibody concentration is 1 mg/ml in PBS buffer with 2% sucrose. For longer periods of storage, store at 20°C. Avoid repeat freeze-thaw cycles.

Precautions

SPATA5L1 Antibody - C-terminal region is for research use only and not for use in diagnostic or therapeutic procedures.

SPATA5L1 Antibody - C-terminal region - Protein Information



SPATA5L1 Antibody - C-terminal region - References

- Ota T., et al. Nat. Genet. 36:40-45(2004).
- Zody M.C., et al. Nature 440:671-675(2006).
- Burkard T.R., et al. BMC Syst. Biol. 5:17-17(2011).
- Van Damme P., et al. Proc. Natl. Acad. Sci. U.S.A. 109:12449-12454(2012).

Name SPATA5L1

Cellular Location

Cytoplasm
{ECO:0000269|PubMed:18445686,
ECO:0000305}. Cytoplasm, cytoskeleton,
spindle

**SPATA5L1 Antibody - C-terminal region -
Protocols**

Provided below are standard protocols that you
may find useful for product applications.

- [Western Blot](#)
- [Blocking Peptides](#)
- [Dot Blot](#)
- [Immunohistochemistry](#)
- [Immunofluorescence](#)
- [Immunoprecipitation](#)
- [Flow Cytometry](#)
- [Cell Culture](#)