

ZSWIM5 Antibody - C-terminal region
Rabbit Polyclonal Antibody
Catalog # AI15660

Specification

ZSWIM5 Antibody - C-terminal region - Product Information

Application	WB
Primary Accession	Q9P217
Other Accession	NM_020883 , NP_065934
Reactivity	Human, Mouse, Rat, Rabbit, Pig, Horse, Bovine, Guinea Pig, Dog
Predicted	Human, Mouse, Rat, Rabbit, Pig, Horse, Bovine, Guinea Pig, Dog
Host	Rabbit
Clonality	Polyclonal
Calculated MW	130kDa KDa

ZSWIM5 Antibody - C-terminal region - Additional Information

Gene ID 57643

Other Names

Zinc finger SWIM domain-containing protein 5, ZSWIM5, KIAA1511

Format

Liquid. Purified antibody supplied in 1x PBS buffer with 0.09% (w/v) sodium azide and 2% sucrose.

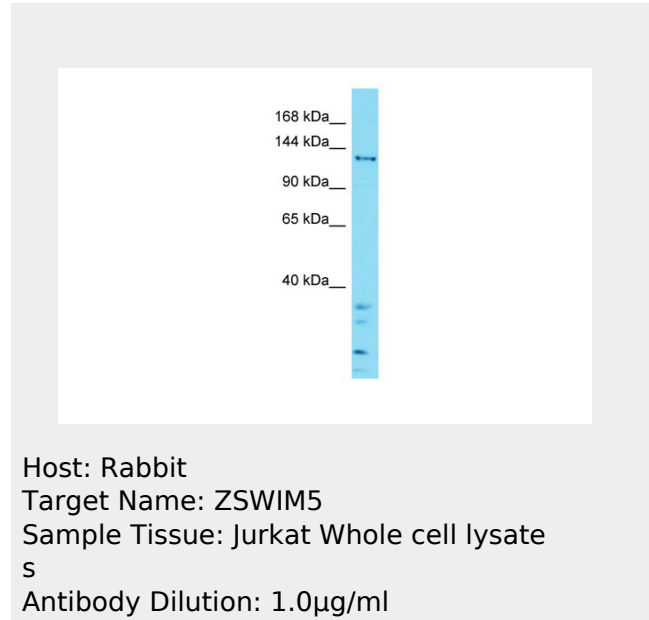
Reconstitution & Storage

Add 50 ul of distilled water. Final anti-ZSWIM5 antibody concentration is 1 mg/ml in PBS buffer with 2% sucrose. For longer periods of storage, store at 20°C. Avoid repeat freeze-thaw cycles.

Precautions

ZSWIM5 Antibody - C-terminal region is for research use only and not for use in diagnostic or therapeutic procedures.

ZSWIM5 Antibody - C-terminal region - Protein



ZSWIM5 Antibody - C-terminal region - References

Nagase T., et al. DNA Res. 7:143-150(2000).
Gregory S.G., et al. Nature 441:315-321(2006).

Information**Name** ZSWIM5**Synonyms** KIAA1511**ZSWIM5 Antibody - C-terminal region -
Protocols**

Provided below are standard protocols that you may find useful for product applications.

- [Western Blot](#)
- [Blocking Peptides](#)
- [Dot Blot](#)
- [Immunohistochemistry](#)
- [Immunofluorescence](#)
- [Immunoprecipitation](#)
- [Flow Cytometry](#)
- [Cell Culture](#)