

Rrp15 Antibody - middle region
Rabbit Polyclonal Antibody
Catalog # AI15636

Specification

Rrp15 Antibody - middle region - Product Information

Application	WB
Primary Accession	Q9CYX7
Other Accession	NM_026041 , NP_080317
Reactivity	Human, Mouse, Rat, Rabbit, Horse, Bovine, Guinea Pig, Dog
Predicted	Human, Mouse, Rat, Rabbit, Pig, Horse, Bovine, Guinea Pig, Dog
Host	Rabbit
Clonality	Polyclonal
Calculated MW	31kDa KDa

Rrp15 Antibody - middle region - Additional Information

Gene ID 67223

Alias Symbol **2810430M08Rik, 5430437H21Rik**

Other Names

RRP15-like protein, Ribosomal RNA-processing protein 15, Rrp15

Format

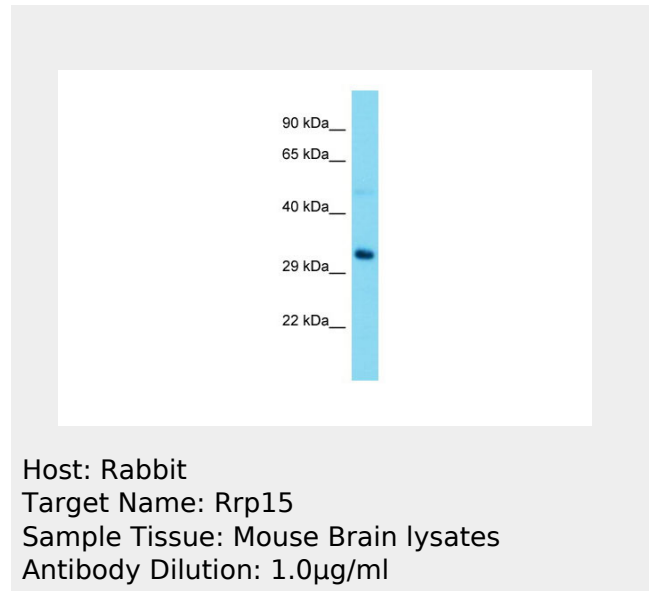
Liquid. Purified antibody supplied in 1x PBS buffer with 0.09% (w/v) sodium azide and 2% sucrose.

Reconstitution & Storage

Add 50 ul of distilled water. Final anti-Rrp15 antibody concentration is 1 mg/ml in PBS buffer with 2% sucrose. For longer periods of storage, store at 20°C. Avoid repeat freeze-thaw cycles.

Precautions

Rrp15 Antibody - middle region is for research use only and not for use in diagnostic or therapeutic procedures.



Rrp15 Antibody - middle region - References

Carninci P., et al. Science 309:1559-1563(2005).
Villen J., et al. Proc. Natl. Acad. Sci. U.S.A. 104:1488-1493(2007).
Christophorou M.A., et al. Nature 507:104-108(2014).

Rrp15 Antibody - middle region - Protein Information

Name Rrp15

Rrp15 Antibody - middle region - Protocols

Provided below are standard protocols that you may find useful for product applications.

- [Western Blot](#)
- [Blocking Peptides](#)
- [Dot Blot](#)
- [Immunohistochemistry](#)
- [Immunofluorescence](#)
- [Immunoprecipitation](#)
- [Flow Cytometry](#)
- [Cell Culture](#)