

CECR5 Antibody - C-terminal region
Rabbit Polyclonal Antibody
Catalog # AI15634**Specification****CECR5 Antibody - C-terminal region - Product Information**

Application	WB
Primary Accession	Q9BXW7
Other Accession	NM_033070 , NP_149061
Reactivity	Human
Predicted	Human
Host	Rabbit
Clonality	Polyclonal
Calculated MW	47kDa KDa

CECR5 Antibody - C-terminal region - Additional Information**Gene ID** 27440**Other Names**Cat eye syndrome critical region protein 5,
CECR5**Format**

Liquid. Purified antibody supplied in 1x PBS buffer with 0.09% (w/v) sodium azide and 2% sucrose.

Reconstitution & Storage

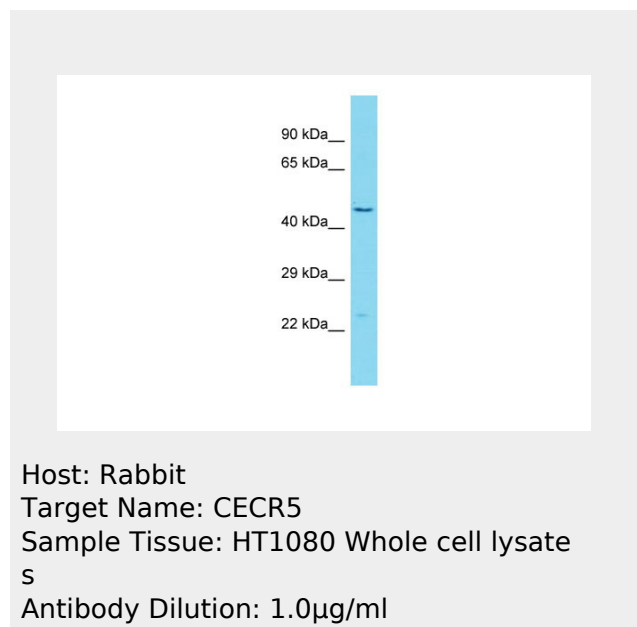
Add 50 ul of distilled water. Final anti-CECR5 antibody concentration is 1 mg/ml in PBS buffer with 2% sucrose. For longer periods of storage, store at 20°C. Avoid repeat freeze-thaw cycles.

Precautions

CECR5 Antibody - C-terminal region is for research use only and not for use in diagnostic or therapeutic procedures.

CECR5 Antibody - C-terminal region - Protein Information**Name** HDHD5 ([HGNC:1843](#))**Tissue Location**

Widely expressed.

**CECR5 Antibody - C-terminal region - References**Footz T.K., et al. Genome Res. 11:1053-1070(2001).
Ota T., et al. Nat. Genet. 36:40-45(2004).
Mural R.J., et al. Submitted (JUL-2005) to the EMBL/GenBank/DDBJ databases.
Burkard T.R., et al. BMC Syst. Biol. 5:17-17(2011).

CECR5 Antibody - C-terminal region - Protocols

Provided below are standard protocols that you may find useful for product applications.

- [Western Blot](#)
- [Blocking Peptides](#)
- [Dot Blot](#)
- [Immunohistochemistry](#)
- [Immunofluorescence](#)
- [Immunoprecipitation](#)
- [Flow Cytometry](#)
- [Cell Culture](#)