

FERMT1 Antibody - C-terminal region
Rabbit Polyclonal Antibody
Catalog # AI15611

Specification

FERMT1 Antibody - C-terminal region - Product Information

Application	WB
Primary Accession	Q49AC8
Reactivity	Human, Mouse, Rat, Rabbit, Pig, Horse, Bovine, Guinea Pig, Dog
Predicted	Human, Mouse, Rat, Rabbit, Pig, Horse, Bovine, Guinea Pig, Dog
Host	Rabbit
Clonality	Polyclonal
Calculated MW	46kDa KDa

FERMT1 Antibody - C-terminal region - Additional Information

Format

Liquid. Purified antibody supplied in 1x PBS buffer with 0.09% (w/v) sodium azide and 2% sucrose.

Reconstitution & Storage

Add 50 ul of distilled water. Final anti-FERMT1 antibody concentration is 1 mg/ml in PBS buffer with 2% sucrose. For longer periods of storage, store at 20°C. Avoid repeat freeze-thaw cycles.

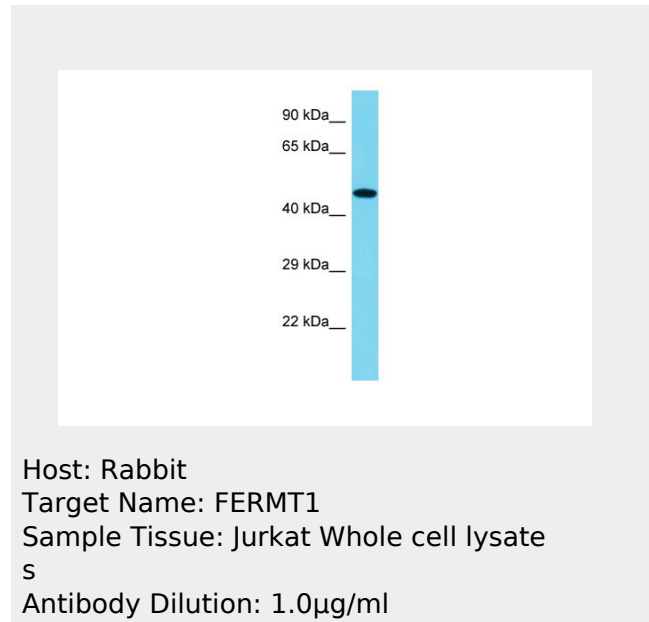
Precautions

FERMT1 Antibody - C-terminal region is for research use only and not for use in diagnostic or therapeutic procedures.

FERMT1 Antibody - C-terminal region - Protein Information

FERMT1 Antibody - C-terminal region - Protocols

Provided below are standard protocols that you



may find useful for product applications.

- [Western Blot](#)
- [Blocking Peptides](#)
- [Dot Blot](#)
- [Immunohistochemistry](#)
- [Immunofluorescence](#)
- [Immunoprecipitation](#)
- [Flow Cytometry](#)
- [Cell Culture](#)