

DDX60L Antibody - N-terminal region
Rabbit Polyclonal Antibody
Catalog # AI15596

Specification

DDX60L Antibody - N-terminal region - Product Information

Application	WB
Primary Accession	Q5H9U9
Other Accession	NM_001012967 , NP_001012985
Reactivity	Human, Horse
Predicted Host	Human, Horse
Clonality	Rabbit
Calculated MW	Polyclonal 187kDa KDa

DDX60L Antibody - N-terminal region - Additional Information

Gene ID 91351

Other Names

Probable ATP-dependent RNA helicase
DDX60-like, 3.6.4.13, DEAD box protein
60-like, DDX60L

Format

Liquid. Purified antibody supplied in 1x PBS buffer with 0.09% (w/v) sodium azide and 2% sucrose.

Reconstitution & Storage

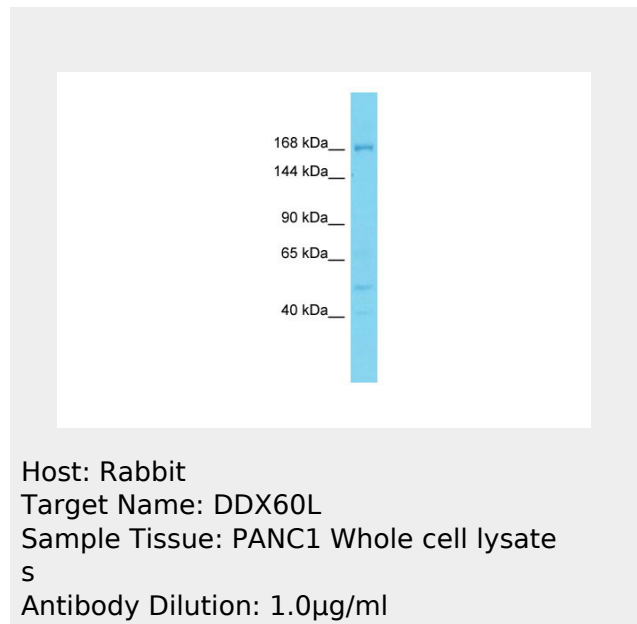
Add 50 ul of distilled water. Final anti-DDX60L antibody concentration is 1 mg/ml in PBS buffer with 2% sucrose. For longer periods of storage, store at 20°C. Avoid repeat freeze-thaw cycles.

Precautions

DDX60L Antibody - N-terminal region is for research use only and not for use in diagnostic or therapeutic procedures.

DDX60L Antibody - N-terminal region - Protein Information

Name DDX60L



DDX60L Antibody - N-terminal region - References

Bechtel S., et al. BMC Genomics 8:399-399(2007).
Hillier L.W., et al. Nature 434:724-731(2005).
Ota T., et al. Nat. Genet. 36:40-45(2004).

**DDX60L Antibody - N-terminal region -
Protocols**

Provided below are standard protocols that you may find useful for product applications.

- [Western Blot](#)
- [Blocking Peptides](#)
- [Dot Blot](#)
- [Immunohistochemistry](#)
- [Immunofluorescence](#)
- [Immunoprecipitation](#)
- [Flow Cytometry](#)
- [Cell Culture](#)