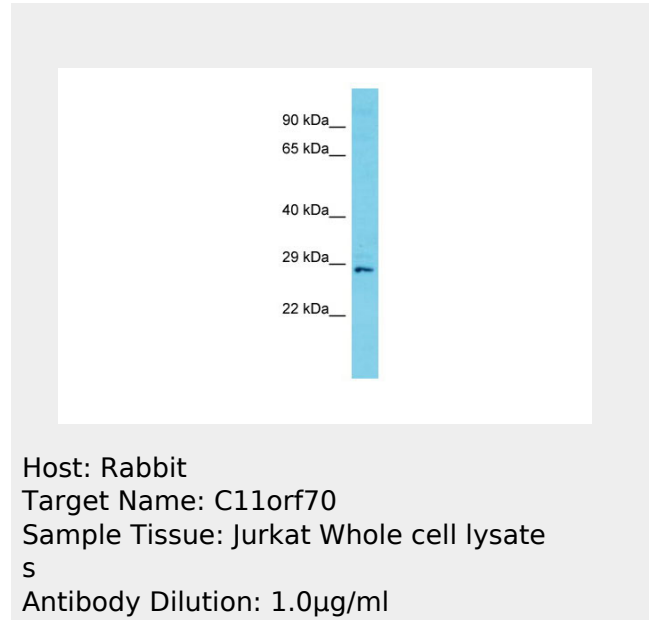


C11orf70 Antibody - C-terminal region
Rabbit Polyclonal Antibody
Catalog # AI15571

Specification

C11orf70 Antibody - C-terminal region - Product Information

Application	WB
Primary Accession	Q9BRO4
Other Accession	NM_032930 , NP_116319
Reactivity	Human, Mouse, Rat, Rabbit, Pig, Horse, Bovine, Guinea Pig, Dog
Predicted	Human, Mouse, Rat, Rabbit, Pig, Horse, Bovine, Guinea Pig, Dog
Host	Rabbit
Clonality	Polyclonal
Calculated MW	25kDa KDa



C11orf70 Antibody - C-terminal region - Additional Information

Gene ID 85016

Other Names

Uncharacterized protein C11orf70, C11orf70

Format

Liquid. Purified antibody supplied in 1x PBS buffer with 0.09% (w/v) sodium azide and 2% sucrose.

Reconstitution & Storage

Add 50 ul of distilled water. Final anti-C11orf70 antibody concentration is 1 mg/ml in PBS buffer with 2% sucrose. For longer periods of storage, store at 20°C. Avoid repeat freeze-thaw cycles.

Precautions

C11orf70 Antibody - C-terminal region is for research use only and not for use in diagnostic or therapeutic procedures.

C11orf70 Antibody - C-terminal region - Protein Information

Name CFAP300 ([HGNC:28188](#))

Synonyms C11orf70

Function

Cilium- and flagellum-specific protein that plays a role in axonemal structure organization and motility. May play a role in outer and inner dynein arm assembly.

Cellular Location

Cytoplasm
{ECO:0000250|UniProtKB:A0CY51}.
Cytoplasm, cytoskeleton, cilium axoneme
{ECO:0000250|UniProtKB:A0CY51}

Tissue Location

Expressed in nasal epithelial cells.

**C11orf70 Antibody - C-terminal region -
Protocols**

Provided below are standard protocols that you may find useful for product applications.

- [Western Blot](#)
- [Blocking Peptides](#)
- [Dot Blot](#)
- [Immunohistochemistry](#)
- [Immunofluorescence](#)
- [Immunoprecipitation](#)
- [Flow Cytometry](#)
- [Cell Culture](#)