

ATP6V0E2 Antibody - N-terminal region
Rabbit Polyclonal Antibody
Catalog # AI15556**Specification****ATP6V0E2 Antibody - N-terminal region - Product Information**

Application	WB
Primary Accession	Q8NHE4-3
Other Accession	NM_145230 , NP_660265
Reactivity	Human, Mouse, Rat, Rabbit, Horse, Bovine, Guinea Pig, Dog
Predicted	Human, Mouse, Rat, Rabbit, Horse, Bovine, Guinea Pig, Dog
Host	Rabbit
Clonality	Polyclonal
Calculated MW	20kDa KDa

ATP6V0E2 Antibody - N-terminal region - Additional Information

Alias Symbol	ATP6V0E2L, C7orf32
--------------	-----------------------

Format

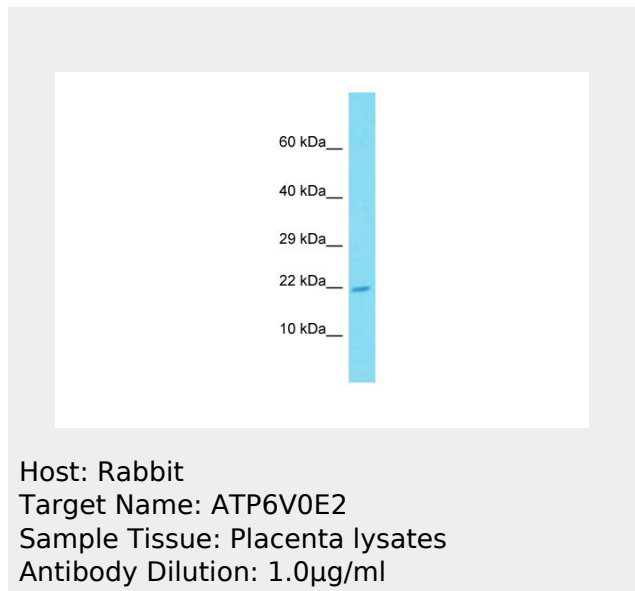
Liquid. Purified antibody supplied in 1x PBS buffer with 0.09% (w/v) sodium azide and 2% sucrose.

Reconstitution & Storage

Add 50 ul of distilled water. Final anti-ATP6V0E2 antibody concentration is 1 mg/ml in PBS buffer with 2% sucrose. For longer periods of storage, store at 20°C. Avoid repeat freeze-thaw cycles.

Precautions

ATP6V0E2 Antibody - N-terminal region is for research use only and not for use in diagnostic or therapeutic procedures.

ATP6V0E2 Antibody - N-terminal region - Protein Information

**ATP6V0E2 Antibody - N-terminal region -
Protocols**

Provided below are standard protocols that you may find useful for product applications.

- [Western Blot](#)
- [Blocking Peptides](#)
- [Dot Blot](#)
- [Immunohistochemistry](#)
- [Immunofluorescence](#)
- [Immunoprecipitation](#)
- [Flow Cytometry](#)
- [Cell Culture](#)