

**ISOC1 Antibody - C-terminal region**  
**Rabbit Polyclonal Antibody**  
Catalog # AI15434

**Specification**

**ISOC1 Antibody - C-terminal region - Product Information**

|                   |   |
|-------------------|---|
| Application       | WB  |
| Primary Accession | <a href="#">Q96CN7</a>  |
| Other Accession   | <a href="#">NM_016048</a> ,<br><a href="#">NP_057132</a>                |
| Reactivity        | Human, Mouse,<br>Rat, Rabbit, Pig,<br>Horse, Bovine,<br>Guinea Pig, Dog |
| Predicted         | Human, Mouse,<br>Rat, Rabbit, Pig,<br>Horse, Bovine,<br>Guinea Pig, Dog |
| Host              | Rabbit  |
| Clonality         | Polyclonal  |
| Calculated MW     | 22kDa KDa   |

**ISOC1 Antibody - C-terminal region - Additional Information**

**Gene ID** 51015

**Alias Symbol** CGI-111  
**Other Names**  
Isochorismatase domain-containing protein 1, ISOC1

**Format**

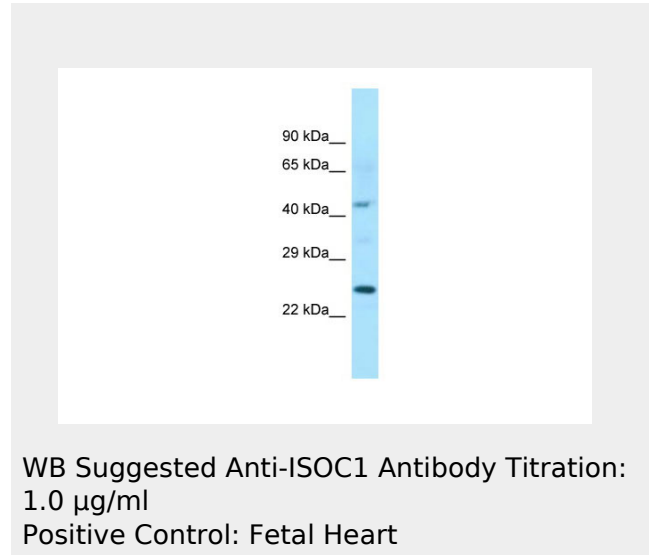
Liquid. Purified antibody supplied in 1x PBS buffer with 0.09% (w/v) sodium azide and 2% sucrose.

**Reconstitution & Storage**

Add 50 ul of distilled water. Final anti-ISOC1 antibody concentration is 1 mg/ml in PBS buffer with 2% sucrose. For longer periods of storage, store at 20°C. Avoid repeat freeze-thaw cycles.

**Precautions**

ISOC1 Antibody - C-terminal region is for research use only and not for use in diagnostic or therapeutic procedures.



**ISOC1 Antibody - C-terminal region - References**

Burkard T.R., et al. BMC Syst. Biol. 5:17-17(2011).

**ISOC1 Antibody - C-terminal region - Protein Information**

**Name** ISOC1

**ISOC1 Antibody - C-terminal region - Protocols**

Provided below are standard protocols that you may find useful for product applications.

- [Western Blot](#)
- [Blocking Peptides](#)
- [Dot Blot](#)
- [Immunohistochemistry](#)
- [Immunofluorescence](#)
- [Immunoprecipitation](#)
- [Flow Cytometry](#)
- [Cell Culture](#)