

**GPR37 Antibody - C-terminal region**  
**Rabbit Polyclonal Antibody**  
**Catalog # AI15109**

**Specification**

**GPR37 Antibody - C-terminal region - Product Information**

Application	<b>WB</b>
Primary Accession	<a href="#">O15354</a>
Other Accession	<a href="#">NM_005302</a> , <a href="#">NP_005293</a>
Reactivity	<b>Human, Mouse, Rat, Rabbit, Pig, Horse, Bovine, Guinea Pig, Dog</b>
Predicted	<b>Human, Mouse, Rat, Rabbit, Pig, Horse, Bovine, Guinea Pig, Dog</b>
Host	<b>Rabbit</b>
Clonality	<b>Polyclonal</b>
Calculated MW	<b>64kDa KDa</b>

**GPR37 Antibody - C-terminal region - Additional Information**

**Gene ID** 2861

**Alias Symbol** **EDNRBL, PAELR, hET(B)R-LP**

**Other Names**

Prosaposin receptor GPR37, Endothelin B receptor-like protein 1, ETBR-LP-1, G-protein coupled receptor 37, Parkin-associated endothelin receptor-like receptor, PAELR, GPR37

**Format**

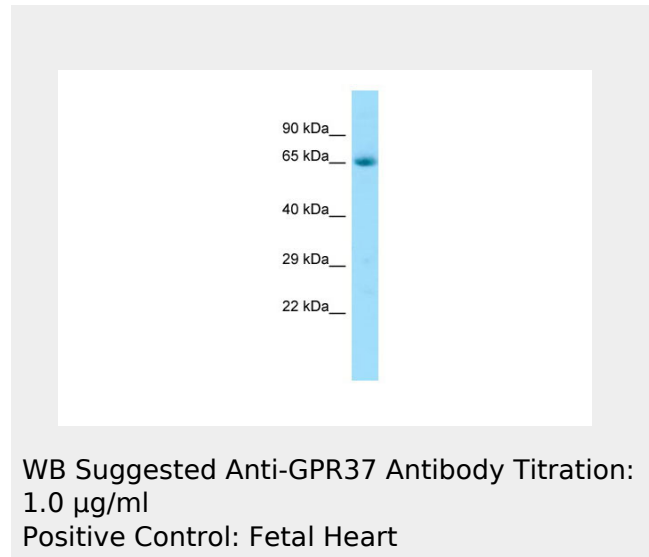
Liquid. Purified antibody supplied in 1x PBS buffer with 0.09% (w/v) sodium azide and 2% sucrose.

**Reconstitution & Storage**

Add 50 ul of distilled water. Final anti-GPR37 antibody concentration is 1 mg/ml in PBS buffer with 2% sucrose. For longer periods of storage, store at 20°C. Avoid repeat freeze-thaw cycles.

**Precautions**

GPR37 Antibody - C-terminal region is for



**GPR37 Antibody - C-terminal region - References**

- Marazziti D., et al. *Genomics* 45:68-77(1997).  
Donohue P.J., et al. *Brain Res. Mol. Brain Res.* 54:152-160(1998).  
Zeng Z., et al. *Biochem. Biophys. Res. Commun.* 233:559-567(1997).  
Imai Y., et al. *Cell* 105:891-902(2001).  
Hillier L.W., et al. *Nature* 424:157-164(2003).

research use only and not for use in diagnostic or therapeutic procedures.

#### **GPR37 Antibody - C-terminal region - Protein Information**

**Name** GPR37

#### **Function**

Receptor for the neuroprotective and glioprotective factor prosaposin. Ligand binding induces endocytosis, followed by an ERK phosphorylation cascade.

#### **Cellular Location**

Cell membrane; Multi-pass membrane protein. Endoplasmic reticulum membrane; Multi-pass membrane protein

#### **Tissue Location**

Expressed in brain and spinal cord, and at lower levels in testis, placenta and liver, but no detectable expression observed in any other tissue. When overexpressed in cells, tends to become insoluble and unfolded. Accumulation of the unfolded protein may lead to dopaminergic neuronal death in juvenile Parkinson disease (PDJ).

#### **GPR37 Antibody - C-terminal region - Protocols**

Provided below are standard protocols that you may find useful for product applications.

- [Western Blot](#)
- [Blocking Peptides](#)
- [Dot Blot](#)
- [Immunohistochemistry](#)
- [Immunofluorescence](#)
- [Immunoprecipitation](#)
- [Flow Cytometry](#)
- [Cell Culture](#)