

NDUFS4 antibody - middle region
Rabbit Polyclonal Antibody
Catalog # AI15088**Specification****NDUFS4 antibody - middle region - Product Information**

Application	WB
Primary Accession	O43181
Other Accession	NM_002495 , NP_002486
Reactivity	Human, Mouse, Rat, Rabbit, Pig, Horse, Bovine, Guinea Pig, Dog
Predicted	Human, Mouse, Rat, Rabbit, Pig, Horse, Bovine, Guinea Pig, Dog
Host	Rabbit
Clonality	Polyclonal
Calculated MW	20kDa KDa

NDUFS4 antibody - middle region - Additional Information**Gene ID 4724**

Alias Symbol **AQDQ, CI-18**
Other Names
NADH dehydrogenase [ubiquinone]
iron-sulfur protein 4, mitochondrial,
Complex I-18 kDa, CI-18 kDa, Complex
I-AQDQ, CI-AQDQ, NADH-ubiquinone
oxidoreductase 18 kDa subunit, NDUFS4

Format

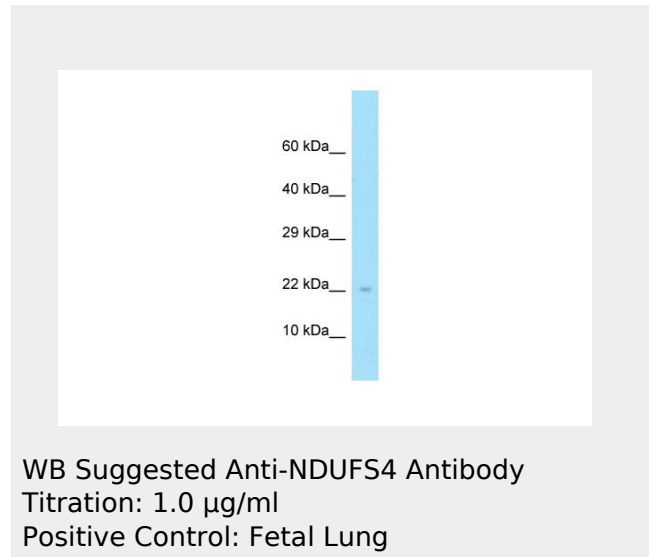
Liquid. Purified antibody supplied in 1x PBS buffer with 0.09% (w/v) sodium azide and 2% sucrose.

Reconstitution & Storage

Add 50 ul of distilled water. Final anti-NDUFS4 antibody concentration is 1 mg/ml in PBS buffer with 2% sucrose. For longer periods of storage, store at 20°C. Avoid repeat freeze-thaw cycles.

Precautions

NDUFS4 antibody - middle region is for research use only and not for use in

**NDUFS4 antibody - middle region - References**

van den Heuvel L., et al. Am. J. Hum. Genet. 62:262-268(1998).
Murray J., et al. J. Biol. Chem. 278:13619-13622(2003).
Burkard T.R., et al. BMC Syst. Biol. 5:17-17(2011).

diagnostic or therapeutic procedures.

NDUFS4 antibody - middle region - Protein Information

Name NDUFS4

Function

Accessory subunit of the mitochondrial membrane respiratory chain NADH dehydrogenase (Complex I), that is believed not to be involved in catalysis. Complex I functions in the transfer of electrons from NADH to the respiratory chain. The immediate electron acceptor for the enzyme is believed to be ubiquinone.

Cellular Location

Mitochondrion inner membrane; Peripheral membrane protein; Matrix side. Note=The interaction with BCAP31 mediates mitochondria localization.

NDUFS4 antibody - middle region - Protocols

Provided below are standard protocols that you may find useful for product applications.

- [Western Blot](#)
- [Blocking Peptides](#)
- [Dot Blot](#)
- [Immunohistochemistry](#)
- [Immunofluorescence](#)
- [Immunoprecipitation](#)
- [Flow Cytometry](#)
- [Cell Culture](#)