

Abi3 Antibody - C-terminal region
Rabbit Polyclonal Antibody
Catalog # AI14971**Specification****Abi3 Antibody - C-terminal region - Product Information**

Application	WB
Primary Accession	Q8BYZ1
Other Accession	NM_025659 , NP_079935
Reactivity	Human, Mouse, Rat, Rabbit, Pig, Horse, Bovine, Dog
Predicted	Human, Mouse, Rat, Rabbit, Pig, Horse, Bovine, Dog
Host	Rabbit
Clonality	Polyclonal
Calculated MW	39kDa KDa

Abi3 Antibody - C-terminal region - Additional Information**Gene ID** 66610Alias Symbol **2210414K06Rik,**
AI987680, NESH**Other Names**

ABI gene family member 3, New molecule including SH3, Nesh, Abi3, Nesh

Format

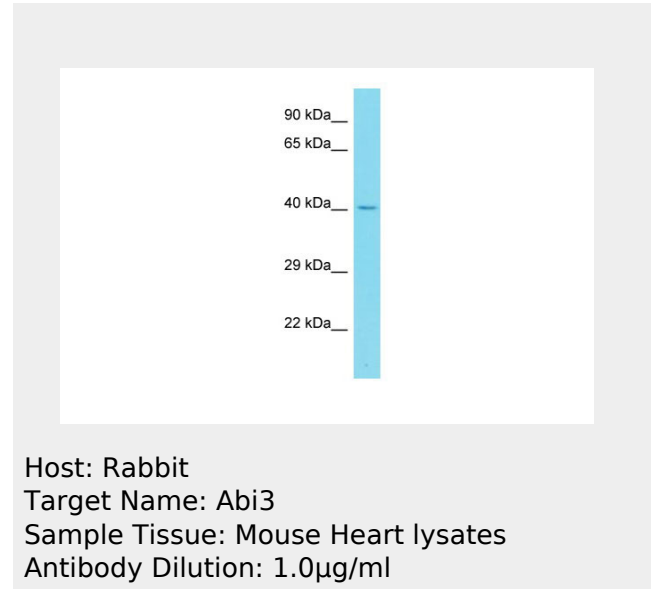
Liquid. Purified antibody supplied in 1x PBS buffer with 0.09% (w/v) sodium azide and 2% sucrose.

Reconstitution & Storage

Add 50 ul of distilled water. Final anti-Abi3 antibody concentration is 1 mg/ml in PBS buffer with 2% sucrose. For longer periods of storage, store at 20°C. Avoid repeat freeze-thaw cycles.

Precautions

Abi3 Antibody - C-terminal region is for research use only and not for use in diagnostic or therapeutic procedures.

**Abi3 Antibody - C-terminal region - References**

Carninci P., et al. Science 309:1559-1563(2005).
Church D.M., et al. PLoS Biol. 7:E1000112-E1000112(2009).
Mural R.J., et al. Submitted (JUL-2005) to the EMBL/GenBank/DDBJ databases.
Ichigotani Y., et al. Cancer Res. 62:2215-2219(2002).

Abi3 Antibody - C-terminal region - Protein Information

Name Abi3

Synonyms Nesh

Function

Inhibits ectopic tumor cell metastasis of SRD cells. In vitro, reduces cell motility.

Cellular Location

Cytoplasm.

Abi3 Antibody - C-terminal region - Protocols

Provided below are standard protocols that you may find useful for product applications.

- [Western Blot](#)
- [Blocking Peptides](#)
- [Dot Blot](#)
- [Immunohistochemistry](#)
- [Immunofluorescence](#)
- [Immunoprecipitation](#)
- [Flow Cytometry](#)
- [Cell Culture](#)