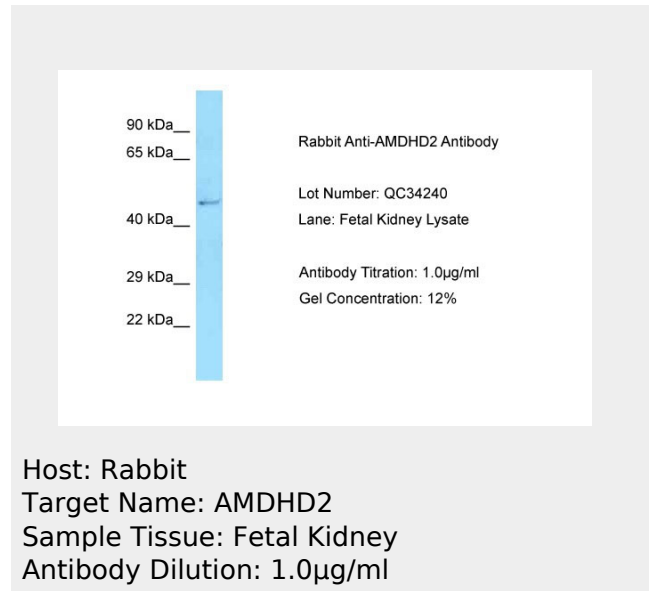


**AMDHD2 antibody - N-terminal region**  
**Rabbit Polyclonal Antibody**  
Catalog # AI14924

**Specification**

**AMDHD2 antibody - N-terminal region - Product Information**

Application	<b>WB</b>
Primary Accession	<a href="#">Q9Y303-2</a>
Other Accession	<a href="#">NM_015944</a> , <a href="#">NP_057028</a>
Reactivity	<b>Human, Mouse, Rat, Rabbit, Pig, Horse, Bovine, Guinea Pig, Dog</b>
Predicted	<b>Mouse, Rabbit, Pig, Horse, Guinea Pig</b>
Host	<b>Rabbit</b>
Clonality	<b>Polyclonal</b>
Calculated MW	<b>47kDa KDa</b>



**AMDHD2 antibody - N-terminal region - Additional Information**

Alias Symbol **CGI-14**

**Format**

Liquid. Purified antibody supplied in 1x PBS buffer with 0.09% (w/v) sodium azide and 2% sucrose.

**Reconstitution & Storage**

Add 50 ul of distilled water. Final anti-AMDHD2 antibody concentration is 1 mg/ml in PBS buffer with 2% sucrose. For longer periods of storage, store at 20°C. Avoid repeat freeze-thaw cycles.

**Precautions**

AMDHD2 antibody - N-terminal region is for research use only and not for use in diagnostic or therapeutic procedures.

**AMDHD2 antibody - N-terminal region - Protein Information**

**AMDHD2 antibody - N-terminal region - Protocols**

Provided below are standard protocols that you may find useful for product applications.

- [Western Blot](#)
- [Blocking Peptides](#)
- [Dot Blot](#)
- [Immunohistochemistry](#)
- [Immunofluorescence](#)
- [Immunoprecipitation](#)
- [Flow Cytometry](#)
- [Cell Culture](#)