

UBE2Q1 antibody - middle region
Rabbit Polyclonal Antibody
Catalog # AI14894

Specification

UBE2Q1 antibody - middle region - Product Information

Application	WB
Primary Accession	Q7Z7E8
Other Accession	NM_017582 , NP_060052
Reactivity	Human, Mouse, Rat, Rabbit, Pig, Horse, Yeast, Bovine, Guinea Pig, Dog
Predicted	Human, Mouse, Rat, Rabbit, Pig, Horse, Bovine, Dog
Host	Rabbit
Clonality	Polyclonal
Calculated MW	46kDa KDa

UBE2Q1 antibody - middle region - Additional Information

Gene ID 55585

Alias Symbol **GTAP, NICE-5, PRO3094, UBE2Q**

Other Names

Ubiquitin-conjugating enzyme E2 Q1, 6.3.2.19, Protein NICE-5, Ubiquitin carrier protein Q1, Ubiquitin-protein ligase Q1, UBE2Q1, NICE5, UBE2Q

Format

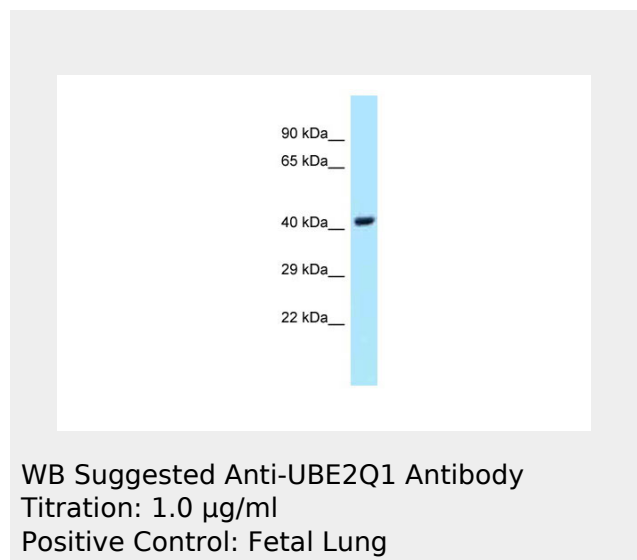
Liquid. Purified antibody supplied in 1x PBS buffer with 0.09% (w/v) sodium azide and 2% sucrose.

Reconstitution & Storage

Add 50 ul of distilled water. Final anti-UBE2Q1 antibody concentration is 1 mg/ml in PBS buffer with 2% sucrose. For longer periods of storage, store at 20°C. Avoid repeat freeze-thaw cycles.

Precautions

UBE2Q1 antibody - middle region is for



UBE2Q1 antibody - middle region - References

Altmann M.E.,et al.Submitted (MAY-2002) to the EMBL/GenBank/DDBJ databases.
Wassler M.,et al.Submitted (FEB-2005) to the EMBL/GenBank/DDBJ databases.
Ota T.,et al.Nat. Genet. 36:40-45(2004).
Gregory S.G.,et al.Nature 441:315-321(2006).
Mural R.J.,et al.Submitted (SEP-2005) to the EMBL/GenBank/DDBJ databases.

research use only and not for use in diagnostic or therapeutic procedures.

UBE2Q1 antibody - middle region - Protein Information

Name UBE2Q1

Synonyms NICE5, UBE2Q

Function

Catalyzes the covalent attachment of ubiquitin to other proteins (PubMed:22496338). May be involved in hormonal homeostasis in females. Involved in regulation of B4GALT1 cell surface expression, B4GALT1-mediated cell adhesion to laminin and embryoid body formation (By similarity).

Cellular Location

Nucleus

{ECO:0000250|UniProtKB:Q7TSS2}. Cell projection, filopodium

{ECO:0000250|UniProtKB:Q7TSS2}.

Cytoplasm, cytosol

{ECO:0000250|UniProtKB:Q7TSS2}

Tissue Location

Widely expressed..

UBE2Q1 antibody - middle region - Protocols

Provided below are standard protocols that you may find useful for product applications.

- [Western Blot](#)
- [Blocking Peptides](#)
- [Dot Blot](#)
- [Immunohistochemistry](#)
- [Immunofluorescence](#)
- [Immunoprecipitation](#)
- [Flow Cytometry](#)
- [Cell Culture](#)