

CALN1 antibody - C-terminal region
Rabbit Polyclonal Antibody
Catalog # AI14825

Specification

CALN1 antibody - C-terminal region - Product Information

Application	WB
Primary Accession	Q9BXU9
Other Accession	NM_031468 , NP_113656
Reactivity	Human, Mouse, Rat, Rabbit, Horse, Bovine, Guinea Pig, Dog
Predicted	Human, Mouse, Rat, Rabbit, Chicken, Horse, Bovine
Host	Rabbit
Clonality	Polyclonal
Calculated MW	24kDa KDa

CALN1 antibody - C-terminal region - Additional Information

Gene ID 83698

Alias Symbol **CABP8**
Other Names
Calcium-binding protein 8, CaBP8,
Calneuron I, Calneuron-1, CALN1, CABP8

Format

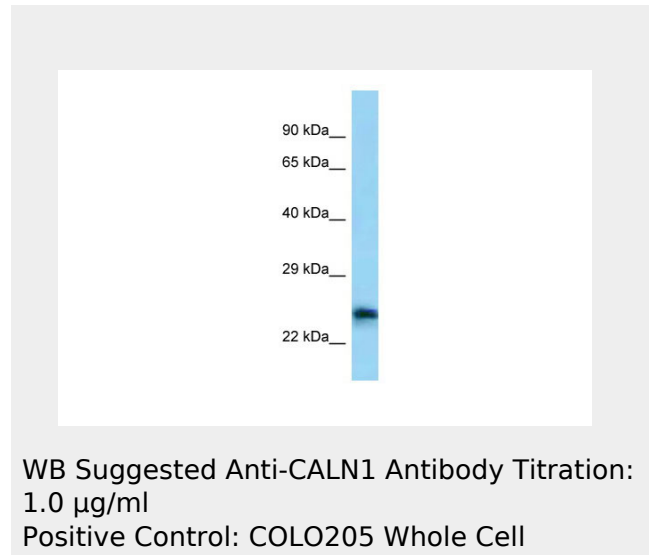
Liquid. Purified antibody supplied in 1x PBS buffer with 0.09% (w/v) sodium azide and 2% sucrose.

Reconstitution & Storage

Add 50 ul of distilled water. Final anti-CALN1 antibody concentration is 1 mg/ml in PBS buffer with 2% sucrose. For longer periods of storage, store at 20°C. Avoid repeat freeze-thaw cycles.

Precautions

CALN1 antibody - C-terminal region is for research use only and not for use in diagnostic or therapeutic procedures.



CALN1 antibody - C-terminal region - References

- Wu Y.-Q., et al. Mol. Genet. Metab. 72:343-350(2001).
Haeseleer F., et al. Submitted (AUG-2000) to the EMBL/GenBank/DDBJ databases.
Hillier L.W., et al. Nature 424:157-164(2003).
Mural R.J., et al. Submitted (JUL-2005) to the EMBL/GenBank/DDBJ databases.
McCue H.V., et al. Biochem. Biophys. Res. Commun. 380:825-831(2009).

CALN1 antibody - C-terminal region - Protein Information**Name** CALN1**Synonyms** CABP8**Function**

Negatively regulates Golgi-to-plasma membrane trafficking by interacting with PI4KB and inhibiting its activity. May play a role in the physiology of neurons and is potentially important in memory and learning.

Cellular Location

Golgi apparatus, trans-Golgi network membrane; Single-pass type IV membrane protein. Cytoplasm, perinuclear region. Cell membrane; Single-pass type IV membrane protein

Tissue Location

Brain specific..

CALN1 antibody - C-terminal region - Protocols

Provided below are standard protocols that you may find useful for product applications.

- [Western Blot](#)
- [Blocking Peptides](#)
- [Dot Blot](#)
- [Immunohistochemistry](#)
- [Immunofluorescence](#)
- [Immunoprecipitation](#)
- [Flow Cytometry](#)
- [Cell Culture](#)