

FGD3 antibody - middle region
Rabbit Polyclonal Antibody
Catalog # AI14818

Specification

FGD3 antibody - middle region - Product Information

Application	WB
Primary Accession	Q5JSP0-2
Other Accession	NM_033086 , NP_149077
Reactivity	Human, Mouse, Rat, Rabbit, Pig, Horse, Bovine
Predicted	Human, Mouse, Rat, Rabbit, Chicken, Horse, Bovine
Host	Rabbit
Clonality	Polyclonal
Calculated MW	70kDa KDa

FGD3 antibody - middle region - Additional Information

Alias Symbol	FLJ00004, MGC117260, ZFYVE5
--------------	------------------------------------

Format

Liquid. Purified antibody supplied in 1x PBS buffer with 0.09% (w/v) sodium azide and 2% sucrose.

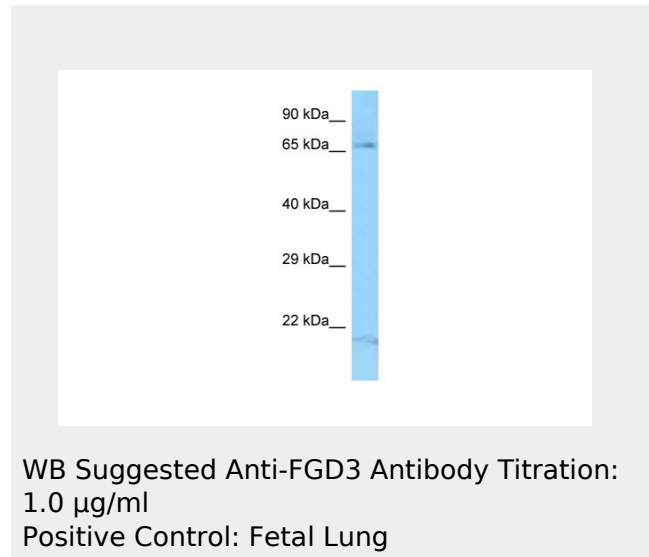
Reconstitution & Storage

Add 50 ul of distilled water. Final anti-FGD3 antibody concentration is 1 mg/ml in PBS buffer with 2% sucrose. For longer periods of storage, store at 20°C. Avoid repeat freeze-thaw cycles.

Precautions

FGD3 antibody - middle region is for research use only and not for use in diagnostic or therapeutic procedures.

FGD3 antibody - middle region - Protein Information



FGD3 antibody - middle region - Protocols

Provided below are standard protocols that you may find useful for product applications.

- [Western Blot](#)
- [Blocking Peptides](#)
- [Dot Blot](#)
- [Immunohistochemistry](#)
- [Immunofluorescence](#)
- [Immunoprecipitation](#)
- [Flow Cytometry](#)
- [Cell Culture](#)