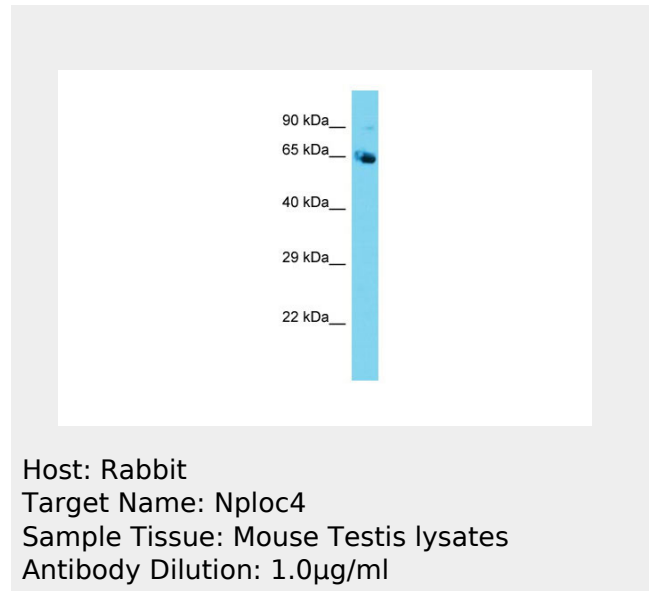


Nploc4 Antibody - N-terminal region
Rabbit Polyclonal Antibody
Catalog # AI14808**Specification****Nploc4 Antibody - N-terminal region - Product Information**

Application	WB
Primary Accession	P60670
Other Accession	NM_001195023 , NP_001181952
Reactivity	Human, Mouse, Rat, Rabbit, Horse, Bovine, Guinea Pig, Dog
Predicted	Human, Mouse, Rat, Rabbit, Pig, Horse, Bovine, Guinea Pig, Dog
Host	Rabbit
Clonality	Polyclonal
Calculated MW	66kDa KDa

Nploc4 Antibody - N-terminal region - Additional Information**Gene ID** 217365Alias Symbol **AK129375, Npl4,
mKIAA1499****Other Names**Nuclear protein localization protein 4
homolog, Protein NPL4, Nploc4, Kiaa1499,
Npl4**Format**Liquid. Purified antibody supplied in 1x PBS
buffer with 0.09% (w/v) sodium azide and
2% sucrose.**Reconstitution & Storage**Add 50 ul of distilled water. Final
anti-Nploc4 antibody concentration is 1
mg/ml in PBS buffer with 2% sucrose. For
longer periods of storage, store at 20°C.
Avoid repeat freeze-thaw cycles.**Precautions**Nploc4 Antibody - N-terminal region is for
research use only and not for use in
diagnostic or therapeutic procedures.**Nploc4 Antibody - N-terminal region - References**Okazaki N.,et al.DNA Res. 10:167-180(2003).
Church D.M.,et al.PLoS Biol.
7:E1000112-E1000112(2009).
Park J.,et al.Mol. Cell 50:919-930(2013).

Nploc4 Antibody - N-terminal region - Protein Information**Name** Nploc4**Synonyms** Kiaa1499, Npl4**Function**

The ternary complex containing UFD1, VCP and NPLOC4 binds ubiquitinated proteins and is necessary for the export of misfolded proteins from the ER to the cytoplasm, where they are degraded by the proteasome. The NPLOC4-UFD1-VCP complex regulates spindle disassembly at the end of mitosis and is necessary for the formation of a closed nuclear envelope (By similarity). Acts as a negative regulator of type I interferon production via the complex formed with VCP and UFD1, which binds to DDX58/RIG-I and recruits RNF125 to promote ubiquitination and degradation of DDX58/RIG-I (By similarity).

Cellular Location

Cytoplasm, cytosol
{ECO:0000250|UniProtKB:Q9ES54}.
Endoplasmic reticulum
{ECO:0000250|UniProtKB:Q9ES54}.
Nucleus {ECO:0000250|UniProtKB:Q9ES54}
Note=Associated with the endoplasmic reticulum and nuclear
{ECO:0000250|UniProtKB:Q9ES54}

Nploc4 Antibody - N-terminal region - Protocols

Provided below are standard protocols that you may find useful for product applications.

- [Western Blot](#)
- [Blocking Peptides](#)
- [Dot Blot](#)
- [Immunohistochemistry](#)
- [Immunofluorescence](#)
- [Immunoprecipitation](#)
- [Flow Cytometry](#)
- [Cell Culture](#)