

MS4A3 antibody - N-terminal region
Rabbit Polyclonal Antibody
Catalog # AI14759

Specification

MS4A3 antibody - N-terminal region - Product Information

Application	WB
Primary Accession	Q96HJ5
Other Accession	NM_006138 , NP_006129
Reactivity	Human
Predicted	Human
Host	Rabbit
Clonality	Polyclonal
Calculated MW	24kDa KDa

MS4A3 antibody - N-terminal region - Additional Information

Gene ID 932

Alias Symbol **CD20L, HTM4**

Other Names

Membrane-spanning 4-domains subfamily A member 3, CD20 antigen-like protein, Hematopoietic-specific transmembrane protein 4, HTm4, MS4A3, CD20L, HTM4

Format

Liquid. Purified antibody supplied in 1x PBS buffer with 0.09% (w/v) sodium azide and 2% sucrose.

Reconstitution & Storage

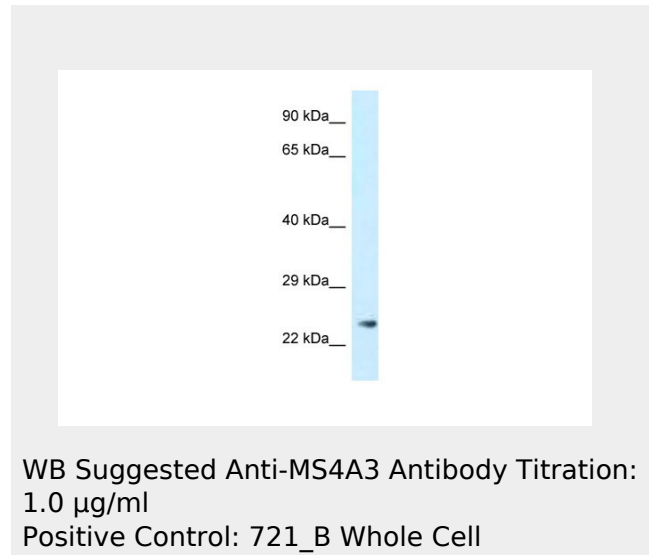
Add 50 ul of distilled water. Final anti-MS4A3 antibody concentration is 1 mg/ml in PBS buffer with 2% sucrose. For longer periods of storage, store at 20°C. Avoid repeat freeze-thaw cycles.

Precautions

MS4A3 antibody - N-terminal region is for research use only and not for use in diagnostic or therapeutic procedures.

MS4A3 antibody - N-terminal region - Protein Information

Name MS4A3



MS4A3 antibody - N-terminal region - References

- Adra C.N.,et al.Proc. Natl. Acad. Sci. U.S.A. 91:10178-10182(1994).
- Xie C.,et al.Submitted (APR-2002) to the EMBL/GenBank/DDBJ databases.
- Shirakawa T.,et al.Submitted (MAR-2003) to the EMBL/GenBank/DDBJ databases.
- Taylor T.D.,et al.Nature 440:497-500(2006).
- Donato J.-L.,et al.J. Clin. Invest. 109:51-58(2002).

Synonyms CD20L, HTM4

Function

Hematopoietic modulator for the G1-S cell cycle transition. Modulates the level of phosphorylation of cyclin-dependent kinase 2 (CDK2) through its direct binding to cyclin-dependent kinase inhibitor 3 (CDKN3/KAP).

Cellular Location

Endomembrane system; Multi-pass membrane protein. Cytoplasm, perinuclear region. Note=Located in the perinuclear area

Tissue Location

Expressed specifically in hematopoietic cells and tissues

**MS4A3 antibody - N-terminal region -
Protocols**

Provided below are standard protocols that you may find useful for product applications.

- [Western Blot](#)
- [Blocking Peptides](#)
- [Dot Blot](#)
- [Immunohistochemistry](#)
- [Immunofluorescence](#)
- [Immunoprecipitation](#)
- [Flow Cytometry](#)
- [Cell Culture](#)