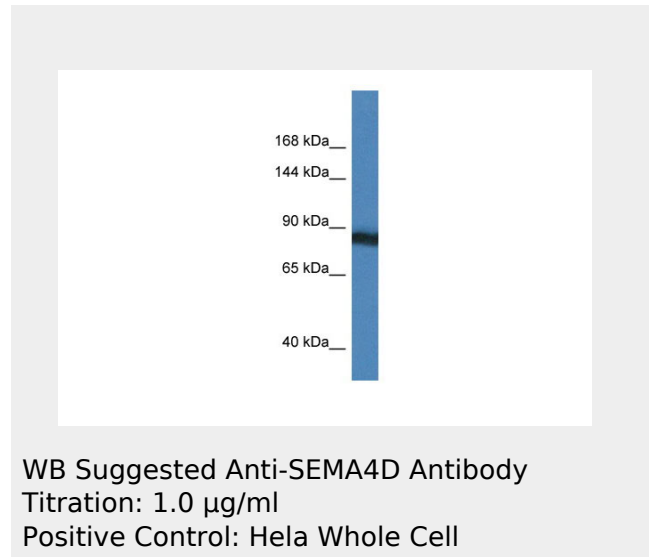


**SEMA4D antibody - N-terminal region**  
**Rabbit Polyclonal Antibody**  
**Catalog # AI14684**

**Specification**

**SEMA4D antibody - N-terminal region - Product Information**

Application	WB
Primary Accession	<a href="#">Q92854-2</a>
Other Accession	<a href="#">NM_001142287</a> , <a href="#">NP_001135759</a>
Reactivity	Human, Mouse, Rat, Rabbit, Pig, Horse, Bovine, Guinea Pig, Dog
Predicted	Human, Mouse, Rat, Rabbit, Pig, Horse, Bovine, Guinea Pig, Dog
Host	Rabbit
Clonality	Polyclonal
Calculated MW	81kDa KDa



**SEMA4D antibody - N-terminal region - Additional Information**

Alias Symbol	C9orf164, CD100, FLJ33485, FLJ34282, FLJ39737, FLJ46484, M-sema-G, MGC169138, MGC169141, SEMAJ, coll-4
--------------	--

**Format**

Liquid. Purified antibody supplied in 1x PBS buffer with 0.09% (w/v) sodium azide and 2% sucrose.

**Reconstitution & Storage**

Add 50 ul of distilled water. Final anti-SEMA4D antibody concentration is 1 mg/ml in PBS buffer with 2% sucrose. For longer periods of storage, store at 20°C. Avoid repeat freeze-thaw cycles.

**Precautions**

SEMA4D antibody - N-terminal region is for research use only and not for use in diagnostic or therapeutic procedures.

**SEMA4D antibody - N-terminal region - Protein Information****SEMA4D antibody - N-terminal region - Protocols**

Provided below are standard protocols that you may find useful for product applications.

- [Western Blot](#)
- [Blocking Peptides](#)
- [Dot Blot](#)
- [Immunohistochemistry](#)
- [Immunofluorescence](#)
- [Immunoprecipitation](#)
- [Flow Cytometry](#)
- [Cell Culture](#)