

**NARS antibody - N-terminal region**  
Rabbit Polyclonal Antibody  
Catalog # AI14682

**Specification**

**NARS antibody - N-terminal region - Product Information**

Application	<b>WB</b>
Primary Accession	<a href="#">O43776</a>
Other Accession	<a href="#">NM_004539</a> , <a href="#">NP_004530</a>
Reactivity	<b>Human, Mouse, Rat, Rabbit, Pig, Horse, Bovine, Guinea Pig, Dog</b>
Predicted	<b>Human, Rat, Rabbit, Pig, Guinea Pig, Dog</b>
Host	<b>Rabbit</b>
Clonality	<b>Polyclonal</b>
Calculated MW	<b>60kDa KDa</b>

**NARS antibody - N-terminal region - Additional Information**

**Gene ID 4677**

Alias Symbol	<b>ASNRS, NARS1</b>
<b>Other Names</b>	
Asparagine--tRNA ligase, cytoplasmic, 6.1.1.22, Asparaginyl-tRNA synthetase, AsnRS, NARS	

**Format**

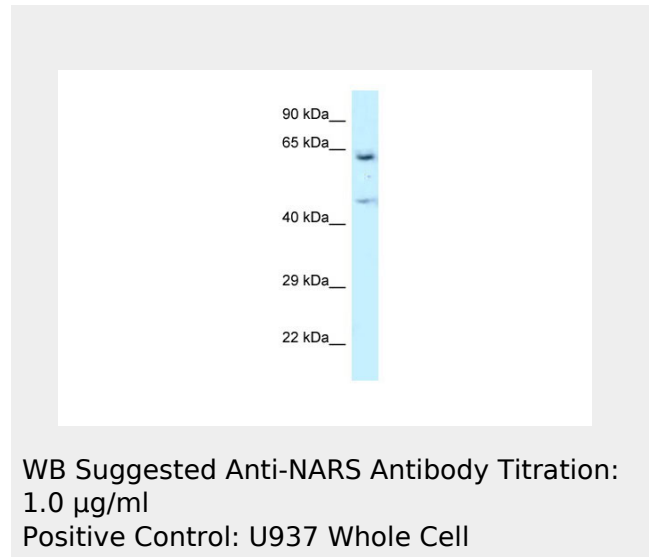
Liquid. Purified antibody supplied in 1x PBS buffer with 0.09% (w/v) sodium azide and 2% sucrose.

**Reconstitution & Storage**

Add 50 ul of distilled water. Final anti-NARS antibody concentration is 1 mg/ml in PBS buffer with 2% sucrose. For longer periods of storage, store at 20°C. Avoid repeat freeze-thaw cycles.

**Precautions**

NARS antibody - N-terminal region is for research use only and not for use in diagnostic or therapeutic procedures.



**NARS antibody - N-terminal region - References**

- Beaulande M., et al. Nucleic Acids Res. 26:521-524(1998).
- Shiba K., et al. Nucleic Acids Res. 26:5045-5051(1998).
- Ota T., et al. Nat. Genet. 36:40-45(2004).
- Suzuki Y., et al. Submitted (APR-2005) to the EMBL/GenBank/DDBJ databases.
- Nusbaum C., et al. Nature 437:551-555(2005).

**NARS antibody - N-terminal region - Protein Information****Name** NARS1 ([HGNC:7643](#))**Function**

Catalyzes the attachment of asparagine to tRNA(Asn) in a two- step reaction: asparagine is first activated by ATP to form Asn-AMP and then transferred to the acceptor end of tRNA(Asn) (PubMed:<a href="http://www.uniprot.org/citations/9421509" target="\_blank">9421509</a>). In addition to its essential role in protein synthesis, acts as a signaling molecule that induced migration of CCR3-expressing cells (PubMed:<a href="http://www.uniprot.org/citations/30171954" target="\_blank">30171954</a>, PubMed:<a href="http://www.uniprot.org/citations/12235211" target="\_blank">12235211</a>).

**Cellular Location**

Cytoplasm.

**NARS antibody - N-terminal region - Protocols**

Provided below are standard protocols that you may find useful for product applications.

- [Western Blot](#)
- [Blocking Peptides](#)
- [Dot Blot](#)
- [Immunohistochemistry](#)
- [Immunofluorescence](#)
- [Immunoprecipitation](#)
- [Flow Cytometry](#)
- [Cell Culture](#)