

XPA antibody - C-terminal region
Rabbit Polyclonal Antibody
 Catalog # AI14632

Specification

XPA antibody - C-terminal region - Product Information

Application	WB
Primary Accession	P23025
Other Accession	NM_000380 , NP_000371
Reactivity	Human, Mouse, Rat, Pig, Horse, Bovine, Guinea Pig, Dog
Predicted	Human, Mouse, Rat, Horse, Bovine, Dog
Host	Rabbit
Clonality	Polyclonal
Calculated MW	31kDa KDa

XPA antibody - C-terminal region - Additional Information

Gene ID 7507

Alias Symbol **XP1, XPAC**
Other Names
 DNA repair protein complementing XP-A cells, Xeroderma pigmentosum group A-complementing protein, XPA, XPAC

Format

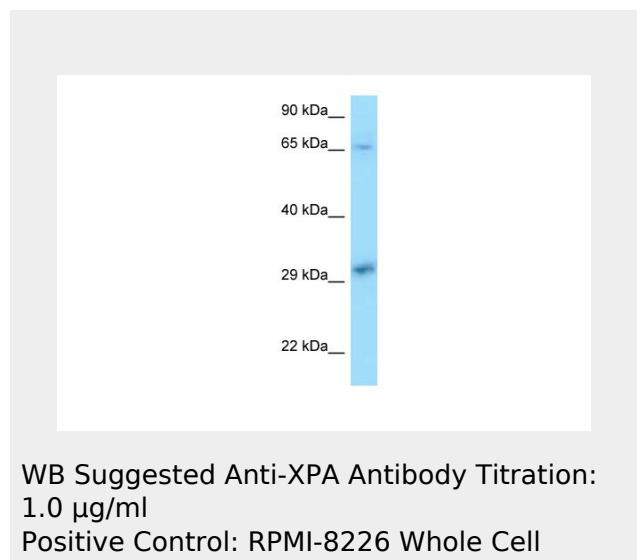
Liquid. Purified antibody supplied in 1x PBS buffer with 0.09% (w/v) sodium azide and 2% sucrose.

Reconstitution & Storage

Add 50 ul of distilled water. Final anti-XPA antibody concentration is 1 mg/ml in PBS buffer with 2% sucrose. For longer periods of storage, store at 20°C. Avoid repeat freeze-thaw cycles.

Precautions

XPA antibody - C-terminal region is for research use only and not for use in diagnostic or therapeutic procedures.



XPA antibody - C-terminal region - References

Tanaka K., et al. Nature 348:73-76(1990).
 Kalnine N., et al. Submitted (MAY-2003) to the EMBL/GenBank/DDBJ databases.
 Humphray S.J., et al. Nature 429:369-374(2004).
 Mural R.J., et al. Submitted (JUL-2005) to the EMBL/GenBank/DDBJ databases.
 Satokata I., et al. Gene 136:345-348(1993).

XPA antibody - C-terminal region - Protein Information**Name** XPA**Synonyms** XPAC**Function**

Involved in DNA excision repair. Initiates repair by binding to damaged sites with various affinities, depending on the photoproduct and the transcriptional state of the region. Required for UV-induced CHEK1 phosphorylation and the recruitment of CEP164 to cyclobutane pyrimidine dimers (CPD), sites of DNA damage after UV irradiation.

Cellular Location

Nucleus

Tissue Location

Expressed in various cell lines and in skin fibroblasts.

XPA antibody - C-terminal region - Protocols

Provided below are standard protocols that you may find useful for product applications.

- [Western Blot](#)
- [Blocking Peptides](#)
- [Dot Blot](#)
- [Immunohistochemistry](#)
- [Immunofluorescence](#)
- [Immunoprecipitation](#)
- [Flow Cytometry](#)
- [Cell Culture](#)