

OR2J2 antibody - C-terminal region
Rabbit Polyclonal Antibody
Catalog # AI14450

Specification

OR2J2 antibody - C-terminal region - Product Information

Application	WB
Primary Accession	O76002
Other Accession	NM_030905 , NP_112167
Reactivity	Human, Rabbit, Pig, Horse, Bovine
Predicted Host	Human
Clonality	Rabbit
Calculated MW	Polyclonal 35kDa KDa

OR2J2 antibody - C-terminal region - Additional Information

Gene ID 26707

Alias Symbol	MGC119134, MGC119135, MGC119136, MGC119137, OR6-19, OR6-8, OR6.3.8, ORL684, dj80i19.4, hs6M1-6
--------------	---

Other Names

Olfactory receptor 2J2, Hs6M1-6, Olfactory receptor 6-8, OR6-8, Olfactory receptor OR6-19, OR2J2

Format

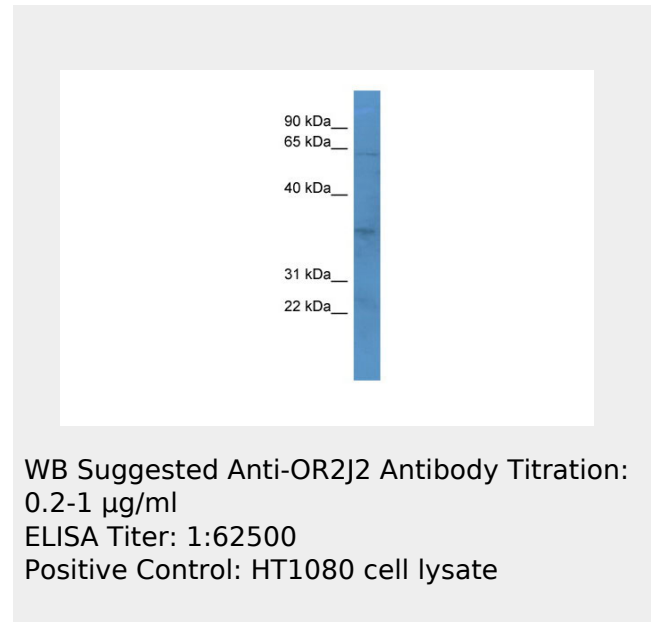
Liquid. Purified antibody supplied in 1x PBS buffer with 0.09% (w/v) sodium azide and 2% sucrose.

Reconstitution & Storage

Add 50 ul of distilled water. Final anti-OR2J2 antibody concentration is 1 mg/ml in PBS buffer with 2% sucrose. For longer periods of storage, store at 20°C. Avoid repeat freeze-thaw cycles.

Precautions

OR2J2 antibody - C-terminal region is for



OR2J2 antibody - C-terminal region - References

Ziegler A., et al. (In) Kasahara M. (eds.); Mungall A.J., et al. Nature 425:805-811(2003).
Malnic B., et al. Proc. Natl. Acad. Sci. U.S.A. 101:2584-2589(2004).
Malnic B., et al. Proc. Natl. Acad. Sci. U.S.A. 101:7205-7205(2004).

research use only and not for use in
diagnostic or therapeutic procedures.

**OR2J2 antibody - C-terminal region - Protein
Information**

Name OR2J2

Function

Odorant receptor.

Cellular Location

Cell membrane; Multi-pass membrane
protein.

**OR2J2 antibody - C-terminal region -
Protocols**

Provided below are standard protocols that you
may find useful for product applications.

- [Western Blot](#)
- [Blocking Peptides](#)
- [Dot Blot](#)
- [Immunohistochemistry](#)
- [Immunofluorescence](#)
- [Immunoprecipitation](#)
- [Flow Cytometry](#)
- [Cell Culture](#)