

ALDH9A1 antibody - C-terminal region
Rabbit Polyclonal Antibody
Catalog # AI14424

Specification

ALDH9A1 antibody - C-terminal region - Product Information

Application	WB
Primary Accession	B9EKV4
Other Accession	NM_000696 , NP_000687
Reactivity	Human, Mouse, Rat, Rabbit, Horse, Bovine, Guinea Pig, Dog
Predicted	Human, Mouse, Rat, Rabbit, Pig, Chicken, Horse, Bovine, Guinea Pig, Dog
Host	Rabbit
Clonality	Polyclonal
Calculated MW	56kDa KDa

ALDH9A1 antibody - C-terminal region - Additional Information

Alias Symbol	ALDH4, ALDH7, ALDH9, E3, TMABADH
--------------	---

Format

Liquid. Purified antibody supplied in 1x PBS buffer with 0.09% (w/v) sodium azide and 2% sucrose.

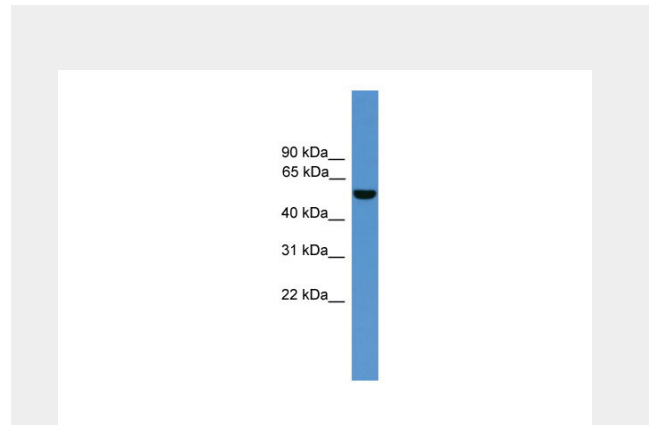
Reconstitution & Storage

Add 50 ul of distilled water. Final anti-ALDH9A1 antibody concentration is 1 mg/ml in PBS buffer with 2% sucrose. For longer periods of storage, store at 20°C. Avoid repeat freeze-thaw cycles.

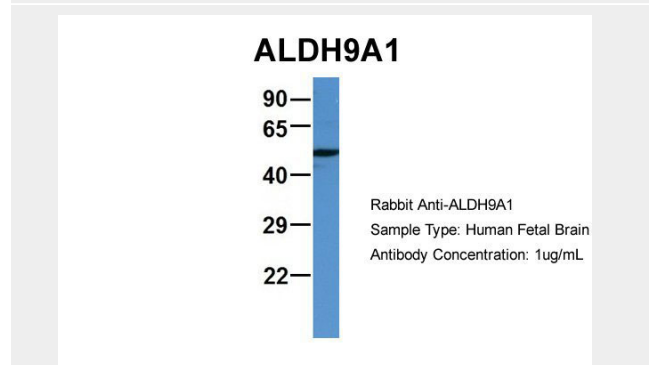
Precautions

ALDH9A1 antibody - C-terminal region is for research use only and not for use in diagnostic or therapeutic procedures.

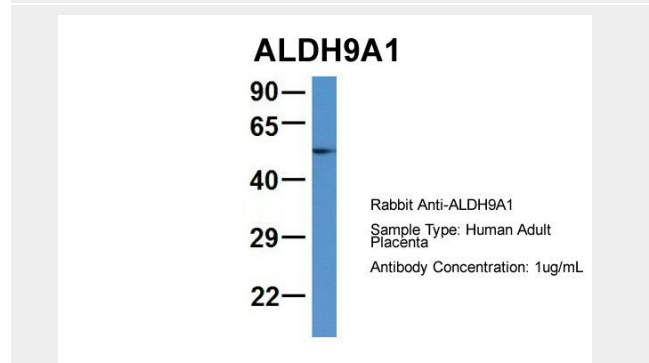
ALDH9A1 antibody - C-terminal region - Protein Information



WB Suggested Anti-ALDH9A1 Antibody Titration: 0.2-1 µg/ml
ELISA Titer: 1:1562500
Positive Control: Human Liver



Host:Rabbit
Target Name:ALDH9A1
Sample Tissue:Human Fetal Brain
Antibody Dilution: 1.0µg/ml



Host:Rabbit
Target Name:ALDH9A1

Sample Tissue: Human Adult Placenta
Antibody Dilution: 1.0µg/ml

ALDH9A1 antibody - C-terminal region - Protocols

Provided below are standard protocols that you may find useful for product applications.

- [Western Blot](#)
- [Blocking Peptides](#)
- [Dot Blot](#)
- [Immunohistochemistry](#)
- [Immunofluorescence](#)
- [Immunoprecipitation](#)
- [Flow Cytometry](#)
- [Cell Culture](#)