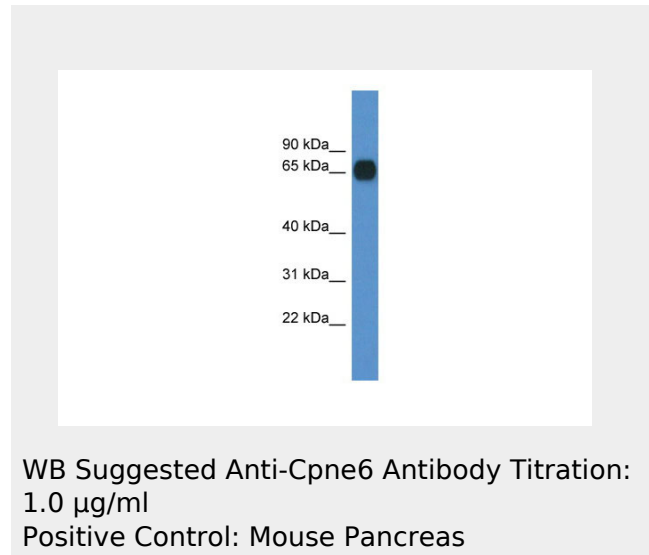


Cpne6 antibody - C-terminal region
Rabbit Polyclonal Antibody
Catalog # AI14400**Specification****Cpne6 antibody - C-terminal region - Product Information**

Application	WB
Primary Accession	Q9Z140
Other Accession	NM_009947 , NP_034077
Reactivity	Human, Mouse, Rat, Rabbit, Pig, Sheep, Horse, Bovine, Guinea Pig, Dog
Predicted	Human, Mouse, Rat, Rabbit, Pig, Bovine
Host	Rabbit
Clonality	Polyclonal
Calculated MW	62kDa KDa

Cpne6 antibody - C-terminal region - Additional Information**Gene ID** 12891Alias Symbol **AU067659**,
BB076446**Other Names**Copine-6, Copine VI, Neuronal-copine,
N-copine, Cpne6**Format**Liquid. Purified antibody supplied in 1x PBS
buffer with 0.09% (w/v) sodium azide and
2% sucrose.**Reconstitution & Storage**Add 50 ul of distilled water. Final anti-Cpne6
antibody concentration is 1 mg/ml in PBS
buffer with 2% sucrose. For longer periods
of storage, store at 20°C. Avoid repeat
freeze-thaw cycles.**Precautions**Cpne6 antibody - C-terminal region is for
research use only and not for use in
diagnostic or therapeutic procedures.**Cpne6 antibody - C-terminal region - References**Nakayama T., et al. FEBS Lett.
428:80-84(1998).

Cpne6 antibody - C-terminal region - Protein Information**Name** Cpne6

{ECO:0000312|MGI:MGI:1334445}

Function

Calcium-dependent phospholipid-binding protein that plays a role in calcium-mediated intracellular processes. Binds phospholipid membranes in a calcium-dependent manner (PubMed:9886090). Plays a role in dendrite formation by melanocytes (By similarity).

Cellular Location

Cytoplasm. Cell membrane. Endosome. Cytoplasmic vesicle, clathrin-coated vesicle. Perikaryon. Cell projection, dendrite. Note=Mainly cytoplasmic in absence of calcium. Associated predominantly with membranes in presence of calcium (PubMed:9886090). Translocates to the cell membrane in a calcium-dependent manner (PubMed:21087455, PubMed:26175110). Colocalized with transferrin in intracellular clathrin-coated membrane vesicles in a calcium-dependent manner (PubMed:21087455)

Tissue Location

Expressed in the brain (PubMed:9645480). Expressed in pyramidal cells, granule cells, and neurons in the dentate gyrus of the hippocampus and in granule cells of the olfactory bulb (at protein level). Expressed in pyramidal cells of the CA1-CA3 regions, in granule cells of the dentate gyrus, in granule cells of the olfactory bulbs, in the mitral cell layer and in neurons of the cerebral cortex layer II, brainstem and spinal cord (PubMed:9886090). Not detected in glial cells (PubMed:9645480, PubMed:9886090).

Cpne6 antibody - C-terminal region - Protocols

Provided below are standard protocols that you may find useful for product applications.

- [Western Blot](#)

- [Blocking Peptides](#)
- [Dot Blot](#)
- [Immunohistochemistry](#)
- [Immunofluorescence](#)
- [Immunoprecipitation](#)
- [Flow Cytometry](#)
- [Cell Culture](#)