

**Ofd1 antibody - N-terminal region**  
**Rabbit Polyclonal Antibody**  
Catalog # AI14307

**Specification**

**Ofd1 antibody - N-terminal region - Product Information**

Application	WB
Primary Accession	<a href="#">D3ZUD5</a>
Other Accession	<a href="#">NM_001106961</a> , <a href="#">NP_001100431</a>
Reactivity	Human, Mouse, Rat, Pig, Horse, Bovine, Guinea Pig, Dog
Predicted	Human, Mouse, Rat, Pig, Chicken, Horse, Bovine, Guinea Pig, Dog
Host	Rabbit
Clonality	Polyclonal
Calculated MW	112kDa KDa

**Ofd1 antibody - N-terminal region - Additional Information**

Alias Symbol **RGD1562231**  
**Format**  
Liquid. Purified antibody supplied in 1x PBS buffer with 0.09% (w/v) sodium azide and 2% sucrose.

**Reconstitution & Storage**

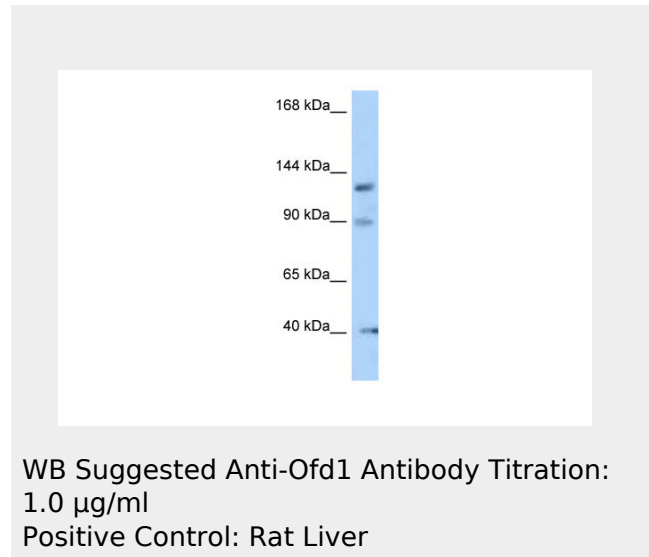
Add 50 ul of distilled water. Final anti-Ofd1 antibody concentration is 1 mg/ml in PBS buffer with 2% sucrose. For longer periods of storage, store at 20°C. Avoid repeat freeze-thaw cycles.

**Precautions**

Ofd1 antibody - N-terminal region is for research use only and not for use in diagnostic or therapeutic procedures.

**Ofd1 antibody - N-terminal region - Protein Information**

**Ofd1 antibody - N-terminal region -**



## Protocols

Provided below are standard protocols that you may find useful for product applications.

- [Western Blot](#)
- [Blocking Peptides](#)
- [Dot Blot](#)
- [Immunohistochemistry](#)
- [Immunofluorescence](#)
- [Immunoprecipitation](#)
- [Flow Cytometry](#)
- [Cell Culture](#)