

Tubb2a Antibody - C-terminal region
Rabbit Polyclonal Antibody
Catalog # AI14306

Specification

Tubb2a Antibody - C-terminal region - Product Information

Application	WB
Primary Accession	Q7TMM9
Other Accession	NM_009450 , NP_033476
Reactivity	Human, Mouse, Rat, Rabbit, Horse, Bovine, Guinea Pig, Dog
Predicted	Human, Mouse, Rat, Rabbit, Pig, Horse, Bovine, Guinea Pig, Dog
Host	Rabbit
Clonality	Polyclonal
Calculated MW	50kDa KDa

Tubb2a Antibody - C-terminal region - Additional Information

Gene ID 22151

Alias Symbol M(beta)2, Tubb2
Other Names
Tubulin beta-2A chain, Tubb2a, Tubb2

Format

Liquid. Purified antibody supplied in 1x PBS buffer with 0.09% (w/v) sodium azide and 2% sucrose.

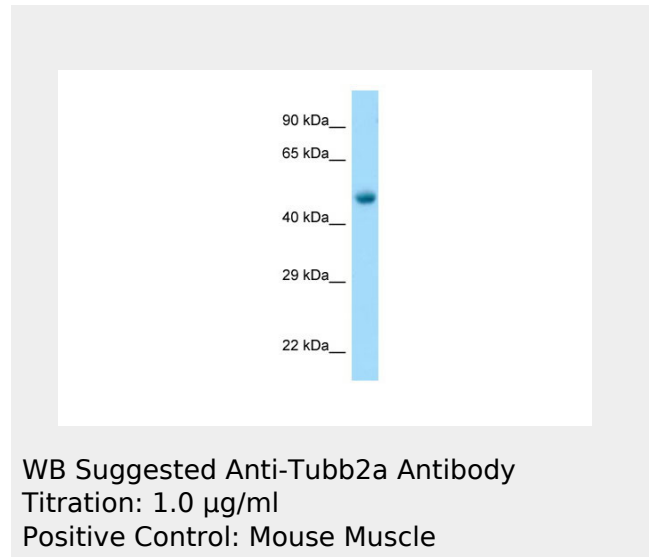
Reconstitution & Storage

Add 50 ul of distilled water. Final anti-Tubb2a antibody concentration is 1 mg/ml in PBS buffer with 2% sucrose. For longer periods of storage, store at 20°C. Avoid repeat freeze-thaw cycles.

Precautions

Tubb2a Antibody - C-terminal region is for research use only and not for use in diagnostic or therapeutic procedures.

Tubb2a Antibody - C-terminal region - Protein



Tubb2a Antibody - C-terminal region - References

- Carninci P., et al. Science 309:1559-1563(2005).
- Lubec G., et al. Submitted (JAN-2009) to UniProtKB.
- Janke C., et al. Science 308:1758-1762(2005).
- Rogowski K., et al. Cell 137:1076-1087(2009).
- Yoshida K., et al. Biochem. Biophys. Res. Commun. 389:506-511(2009).

Information**Name** Tubb2a**Synonyms** Tubb2**Function**

Tubulin is the major constituent of microtubules. It binds two moles of GTP, one at an exchangeable site on the beta chain and one at a non-exchangeable site on the alpha chain (By similarity).

Cellular Location

Cytoplasm, cytoskeleton.

**Tubb2a Antibody - C-terminal region -
Protocols**

Provided below are standard protocols that you may find useful for product applications.

- [Western Blot](#)
- [Blocking Peptides](#)
- [Dot Blot](#)
- [Immunohistochemistry](#)
- [Immunofluorescence](#)
- [Immunoprecipitation](#)
- [Flow Cytometry](#)
- [Cell Culture](#)